

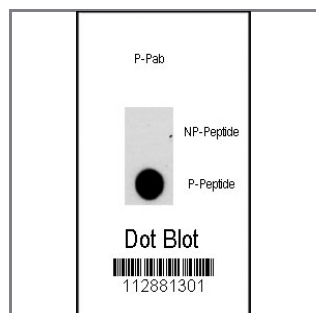
## Phospho-NFATC2-pS330 Antibody

Peptide Affinity Purified Rabbit Polyclonal Antibody (Pab)

Catalog #	Applications:	Reactivity:	Accessions:
AP3429a	DB, E	H	<a href="#">Q13469</a> , <a href="#">NP_036472</a>
Concentration:	Size:	Isotype:	Clone Name:
0.25 mg/ml	0.1 mg	Rabbit Ig	RB12881

### Application Data:

Calculated MW: 99654 Da



Dot blot analysis of anti-NFATC2-pS330 Phospho-specific Pab (Cat.#AP3429a) on nitrocellulose membrane. 50ng of Phospho-peptide or Non Phospho-peptide per dot were adsorbed. Antibody working concentrations are 0.5ug per ml.

### Gene ID:

[4773](#)

### Gene Symbol:

NFATC2

### Other Names:

NFAT1; NFATP; KIAA0611

### Target/Specificity:

This Phospho-NFATC2-pS330 antibody is generated from rabbits immunized with a KLH conjugated synthetic phosphopeptide corresponding to amino acid residues surrounding S330 of human NFATC2.

### Application Notes:

The suggested dilution is:

ELISA 1:1,000

Dot Blot 1:500

### Format:

Purified polyclonal antibody supplied in PBS with 0.09% (W/V) sodium azide. This antibody is first purified by protein A affinity chromatography. Then, the antibody fraction is peptide affinity purified in a 2-step procedure with peptides. The antibody is eluted with high and low pH buffers and neutralized immediately, followed by dialysis against PBS.

**Storage:**

Maintain refrigerated at 2-8°C for up to 6 months. For long term storage store at -20°C in small aliquots to prevent freeze-thaw cycles.

---

**Precautions:**

Phospho-NFATC2-pS330 Antibody is for research use only and not for use in diagnostic or therapeutic procedures.

---