

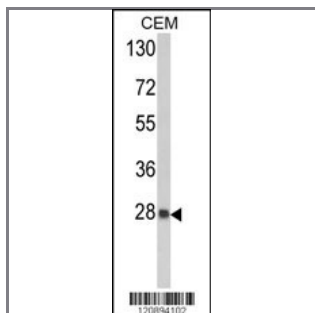
## PRDX6 Antibody (C-term)

Purified Rabbit Polyclonal Antibody (Pab)

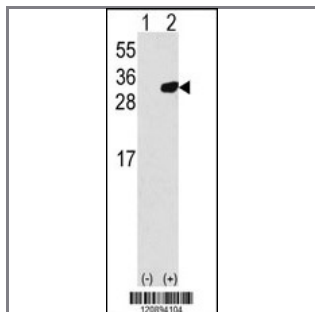
<b>Catalog #</b>	<b>Applications:</b>	<b>Reactivity:</b>	<b>Accessions:</b>
AP2927b	WB, IHC, FC, E	H	<a href="#">P30041</a>

<b>Concentration:</b>	<b>Size:</b>	<b>Isotype:</b>	<b>Clone Name:</b>
0.25 mg/ml	0.1 mg	Rabbit Ig	RB20894

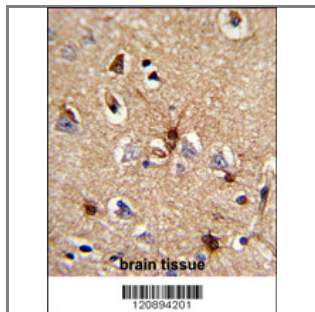
**Application Data:** **Calculated MW: 25035 Da**



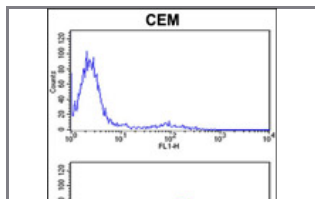
Western blot analysis of PRDX6 Antibody (C-term) (Cat. #AP2927b) in CEM cell line lysates (35ug/lane). PRDX6 (arrow) was detected using the purified Pab.



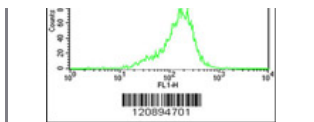
Western blot analysis of PRDX6 (arrow) using rabbit polyclonal PRDX6 Antibody (C-term) (RB20894). 293 cell lysates (2 ug/lane) either nontransfected (Lane 1) or transiently transfected with the PRDX6 gene (Lane 2) .



Formalin-fixed and paraffin-embedded human brain tissue reacted with PRDX6 Antibody (C-term), which was peroxidase-conjugated to the secondary antibody, followed by DAB staining. This data demonstrates the use of this antibody for immunohistochemistry; clinical relevance has not been evaluated.



PRDX6 Antibody (C-term) (Cat. #AP2927b) flow cytometric analysis of CEM cells (bottom histogram) compared to a negative control cell (top histogram).FITC-conjugated goat-anti-rabbit secondary antibodies were



used for the analysis.

---

**Gene ID:**

9588

**Gene Symbol:**

PRDX6

---

**Other Names:**

Peroxiredoxin-6; Antioxidant protein 2; 1-Cys peroxiredoxin; 1-Cys PRX; Acidic calcium-independent phospholipase A2; aiPLA2; Non-selenium glutathione peroxidase; NSGPx; 24 kDa protein; Liver 2D page spot 40; Red blood cells page spot 12; KIAA0106; AOP2; PRDX6

---

**Target/Specificity:**

This PRDX6 antibody is generated from rabbits immunized with a KLH conjugated synthetic peptide between 195~224 amino acids from the C-terminal region of human PRDX6.

---

**Application Notes:**

The suggested dilution is:

ELISA 1:1,000

Western blotting 1:50~100

Immunohistochemistry 1:50~100

Flow cytometric 1:10~50

---

**Format:**

Purified polyclonal antibody supplied in PBS with 0.09% (W/V) sodium azide. This antibody is prepared by Saturated Ammonium Sulfate (SAS) precipitation followed by dialysis against PBS.

---

**Storage:**

Maintain refrigerated at 2-8°C for up to 6 months. For long term storage store at -20°C in small aliquots to prevent freeze-thaw cycles.

---

**Precautions:**

PRDX6 Antibody (C-term) is for research use only and not for use in diagnostic or therapeutic procedures.

---