

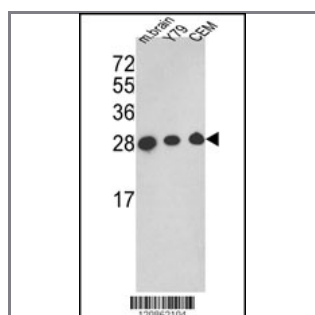
TPI1 Antibody (C-term)

Purified Rabbit Polyclonal Antibody (Pab)

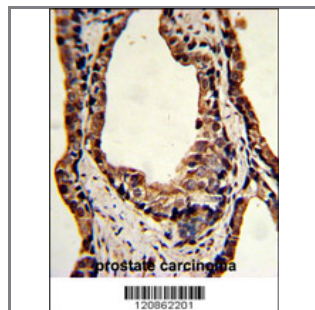
Catalog #	Applications:	Reactivity:	Accessions:
AP2917b	WB, IHC, FC, E	H, M	P60174
Concentration:	Size:	Isotype:	Clone Name:
0.25 mg/ml	0.1 mg	Rabbit Ig	RB20862

Application Data:

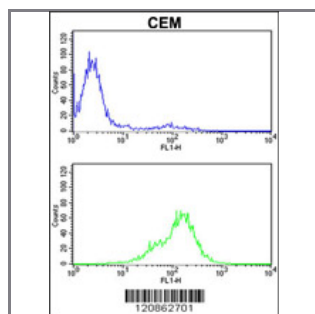
Calculated MW: 26669 Da



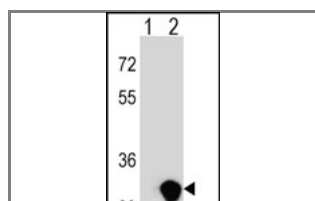
Western blot analysis of TPI1 Antibody (C-term) (Cat. #AP2917b) in Y79,CEM cell line and mouse brain tissue lysates (35ug/lane). TPI1 (arrow) was detected using the purified Pab.(2ug/ml)



Formalin-fixed and paraffin-embedded human prostate carcinoma reacted with TPI1 Antibody (C-term), which was peroxidase-conjugated to the secondary antibody, followed by DAB staining. This data demonstrates the use of this antibody for immunohistochemistry; clinical relevance has not been evaluated.



TPI1 Antibody (C-term) (Cat. #AP2917b) flow cytometric analysis of CEM cells (bottom histogram) compared to a negative control cell (top histogram).FITC-conjugated goat-anti-rabbit secondary antibodies were used for the analysis.



Western blot analysis of TPI1 (arrow) using rabbit polyclonal TPI1 Antibody (C-term) (Cat. #AP2917b). 293 cell lysates (2 ug/lane) either nontransfected (Lane 1) or transiently transfected (Lane 2) with the TPI1



gene.

Gene ID:

7167

Gene Symbol:

TPI1

Other Names:

Target/Specificity:

This TPI1 antibody is generated from rabbits immunized with a KLH conjugated synthetic peptide between 220~249 amino acids from the C-terminal region of human TPI1 Antibody (C-term).

Application Notes:

The suggested dilution is:

ELISA 1:1,000

Western blotting 1:50~100

Immunohistochemistry 1:50~100

Flow cytometric 1:10~50

Format:

Purified polyclonal antibody supplied in PBS with 0.09% (W/V) sodium azide. This antibody is prepared by Saturated Ammonium Sulfate (SAS) precipitation followed by dialysis against PBS.

Storage:

Maintain refrigerated at 2-8°C for up to 6 months. For long term storage store at -20°C in small aliquots to prevent freeze-thaw cycles.

Precautions:

TPI1 Antibody (C-term) is for research use only and not for use in diagnostic or therapeutic procedures.
