

PSMD13 Antibody (C-term)

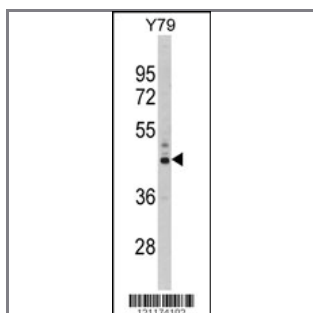
Peptide Affinity Purified Rabbit Polyclonal Antibody (Pab)

Catalog #	Applications:	Reactivity:	Accessions:
AP2915b	WB, IHC, FC, E	H	Q9UNM6

Concentration:	Size:	Isotype:	Clone Name:
0.25 mg/ml	0.1 mg	Rabbit Ig	RB21174

Application Data:

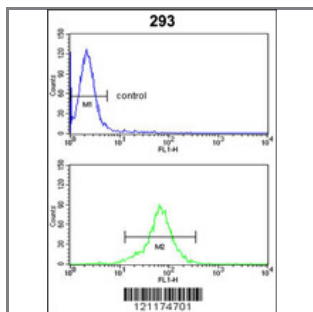
Calculated MW: 42918 Da



Western blot analysis of PSMD13 Antibody (C-term) (Cat. #AP2915b) in Y79 cell line lysates (35ug/lane). PSMD13 (arrow) was detected using the purified Pab.



Formalin-fixed and paraffin-embedded human lung carcinoma reacted with PSMD13 Antibody (C-term), which was peroxidase-conjugated to the secondary antibody, followed by DAB staining. This data demonstrates the use of this antibody for immunohistochemistry; clinical relevance has not been evaluated.



PSMD13 Antibody (C-term) (Cat. #AP2915b) flow cytometric analysis of 293 cells (bottom histogram) compared to a negative control cell (top histogram). FITC-conjugated goat-anti-rabbit secondary antibodies were used for the analysis.

Gene ID:	Gene Symbol:
5719	PSMD13

Other Names:

26S proteasome non-ATPase regulatory subunit 13; 26S proteasome regulatory subunit S11; 26S proteasome regulatory subunit p40.5; PSMD13

Target/Specificity:

This PSMD13 antibody is generated from rabbits immunized with a KLH conjugated synthetic peptide between 266~296 amino acids from the C-terminal region of human PSMD13.

Application Notes:

The suggested dilution is:

ELISA 1:1,000

Western blotting 1:100~500

Immunohistochemistry 1:50~100

Flow cytometric 1:10~50

Format:

Purified polyclonal antibody supplied in PBS with 0.09% (W/V) sodium azide. This antibody is purified through a protein A column, followed by peptide affinity purification.

Storage:

Maintain refrigerated at 2-8°C for up to 6 months. For long term storage store at -20°C in small aliquots to prevent freeze-thaw cycles.

Precautions:

PSMD13 Antibody (C-term) is for research use only and not for use in diagnostic or therapeutic procedures.
