

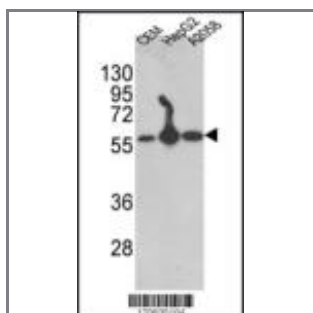
P4HB Antibody (C-term)

Purified Rabbit Polyclonal Antibody (Pab)

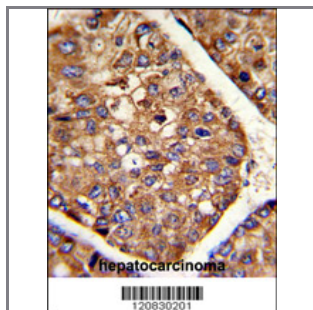
| Catalog # | Applications: | Reactivity: | Accessions: |
|----------------|----------------|-------------|------------------------|
| AP2911b | WB, IHC, FC, E | H | P07237 |
| Concentration: | Size: | Isotype: | Clone Name: |
| 0.25 mg/ml | 0.1 mg | Rabbit Ig | RB20830 |

Application Data:

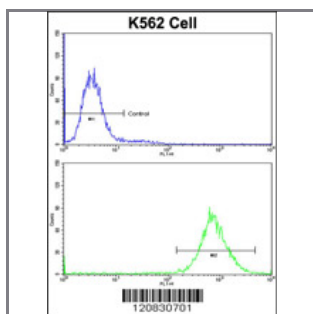
Calculated MW: 57116 Da



Western blot analysis of P4HB Antibody (C-term) (Cat. #AP2911b) in CEM, HepG2, A2058 cell line lysates (35ug/lane). P4HB (arrow) was detected using the purified Pab.(2ug/ml)



Formalin-fixed and paraffin-embedded human hepatocarcinoma reacted with P4HB Antibody (C-term), which was peroxidase-conjugated to the secondary antibody, followed by DAB staining. This data demonstrates the use of this antibody for immunohistochemistry; clinical relevance has not been evaluated.



Flow cytometric analysis of K562 cells using P4HB Antibody (C-term)(bottom histogram) compared to a negative control cell (top histogram) FITC-conjugated goat-anti-rabbit secondary antibodies were used for the analysis.

| Gene ID: | Gene Symbol: |
|----------------------|--------------|
| 5034 | P4HB |

Other Names:

Protein disulfide-isomerase; PDI; Prolyl 4-hydroxylase subunit beta; Cellular thyroid hormone-binding protein; p55; PO4DB; PDIA1; PDI; ERBA2L; P4HB

Target/Specificity:

This P4HB antibody is generated from rabbits immunized with a KLH conjugated synthetic peptide between 443~472 amino acids from the C-terminal region of human P4HB.

Application Notes:

The suggested dilution is:

ELISA 1:1,000

Western blotting 1:50~100

Immunohistochemistry 1:50~100

Flow cytometric 1:10~50

Format:

Purified polyclonal antibody supplied in PBS with 0.09% (W/V) sodium azide. This antibody is prepared by Saturated Ammonium Sulfate (SAS) precipitation followed by dialysis against PBS.

Storage:

Maintain refrigerated at 2-8°C for up to 6 months. For long term storage store at -20°C in small aliquots to prevent freeze-thaw cycles.

Precautions:

P4HB Antibody (C-term) is for research use only and not for use in diagnostic or therapeutic procedures.
