

MDH2 Antibody (Center)

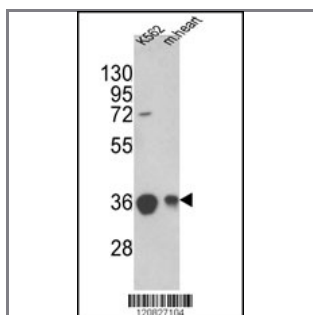
Purified Rabbit Polyclonal Antibody (Pab)

Catalog #	Applications:	Reactivity:	Accessions:
AP2909c	WB, IHC, FC, E	H, M	P40926

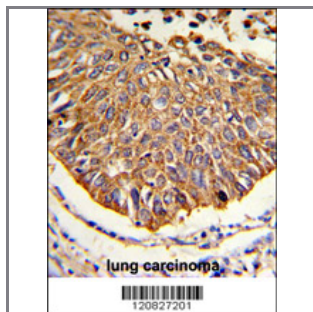
Concentration:	Size:	Isotype:	Clone Name:
0.25 mg/ml	0.1 mg	Rabbit Ig	RB20827

Application Data:

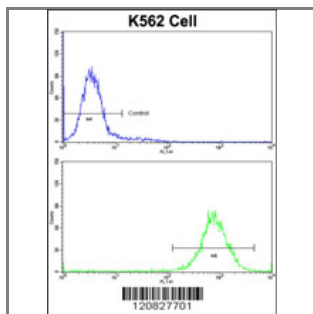
Calculated MW: 35503 Da



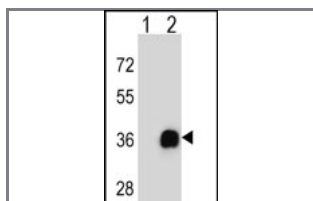
Western blot analysis of MDH2 Antibody (Center) (Cat. #AP2909c) in K562 cell line and mouse heart tissue lysates (35ug/lane). MDH2 (arrow) was detected using the purified Pab.(2ug/ml) .



Formalin-fixed and paraffin-embedded human lung carcinoma reacted with MDH2 Antibody (Center), which was peroxidase-conjugated to the secondary antibody, followed by DAB staining. This data demonstrates the use of this antibody for immunohistochemistry; clinical relevance has not been evaluated.



Flow cytometric analysis of K562 cells using MDH2 Antibody (Center)(bottom histogram) compared to a negative control cell (top histogram)FITC-conjugated goat-anti-rabbit secondary antibodies were used for the analysis.



Western blot analysis of MDH2 (arrow) using rabbit polyclonal MDH2 Antibody (Center) (Cat. #AP2909c). 293 cell lysates (2 ug/lane) either nontransfected (Lane 1) or transiently transfected (Lane 2) with the MDH2



gene.

Gene ID:

4191

Gene Symbol:

MDH2

Other Names:

Malate dehydrogenase, mitochondrial; MDH2

Target/Specificity:

This MDH2 antibody is generated from rabbits immunized with a KLH conjugated synthetic peptide between 93~123 amino acids from the Center region of human MDH2.

Application Notes:

The suggested dilution is:

ELISA 1:1,000

Western blotting 1:50~100

Immunohistochemistry 1:50~100

Flow cytometric 1:10~50

Format:

Purified polyclonal antibody supplied in PBS with 0.09% (W/V) sodium azide. This antibody is prepared by Saturated Ammonium Sulfate (SAS) precipitation followed by dialysis against PBS.

Storage:

Maintain refrigerated at 2-8°C for up to 6 months. For long term storage store at -20°C in small aliquots to prevent freeze-thaw cycles.

Precautions:

MDH2 Antibody (Center) is for research use only and not for use in diagnostic or therapeutic procedures.
