

CFL1 Antibody (N-term)

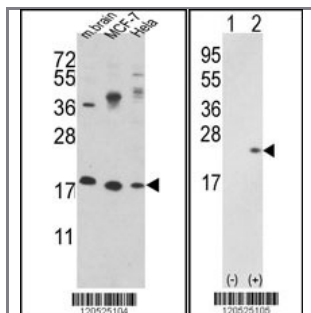
Purified Rabbit Polyclonal Antibody (Pab)

Catalog #	Applications:	Reactivity:	Accessions:
AP2905a	WB, IHC, FC, E	H, M	P23528

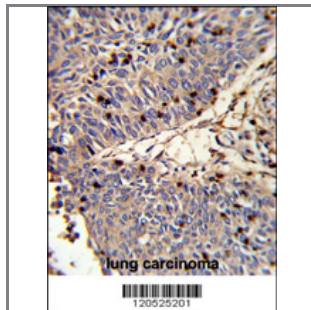
Concentration:	Size:	Isotype:	Clone Name:
0.25 mg/ml	0.1 mg	Rabbit Ig	RB20525

Application Data:

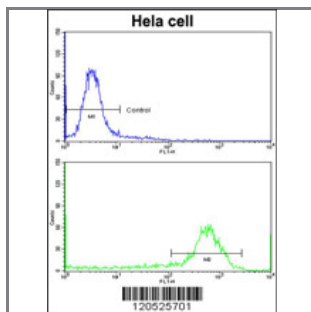
Calculated MW: 18502 Da



Western blot analysis of CFL1 Antibody (N-term) (Cat. #AP2905a) in MCF-7, Hela cell line and mouse brain tissue lysates (35ug/lane). CFL1 (arrow) was detected using the purified Pab.(2ug/ml)



Formalin-fixed and paraffin-embedded human lung carcinoma reacted with CFL1 Antibody (N-term), which was peroxidase-conjugated to the secondary antibody, followed by DAB staining. This data demonstrates the use of this antibody for immunohistochemistry; clinical relevance has not been evaluated.



Flow cytometric analysis of HeLa cells using CFL1 Antibody (N-term)(bottom histogram) compared to a negative control cell (top histogram) FITC-conjugated goat-anti-rabbit secondary antibodies were used for the analysis.

Gene ID:	Gene Symbol:
1072	CFL1

Other Names:

Cofilin-1; Cofilin, non-muscle isoform; 18 kDa phosphoprotein; p18; CFL; CFL1

Target/Specificity:

This CFL1 antibody is generated from rabbits immunized with a KLH conjugated synthetic peptide between 11~40 amino acids from the N-terminal region of human CFL1.

Application Notes:

The suggested dilution is:

ELISA 1:1,000

Western blotting 1:50~100

Immunohistochemistry 1:50~100

Flow cytometric 1:10~50

Format:

Purified polyclonal antibody supplied in PBS with 0.09% (W/V) sodium azide. This antibody is prepared by Saturated Ammonium Sulfate (SAS) precipitation followed by dialysis against PBS.

Storage:

Maintain refrigerated at 2-8°C for up to 6 months. For long term storage store at -20°C in small aliquots to prevent freeze-thaw cycles.

Precautions:

CFL1 Antibody (N-term) is for research use only and not for use in diagnostic or therapeutic procedures.
