

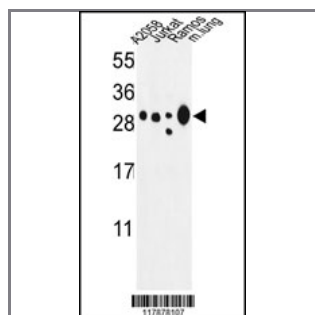
ARHGDIA Antibody (N-term)

Peptide Affinity Purified Rabbit Polyclonal Antibody (Pab)

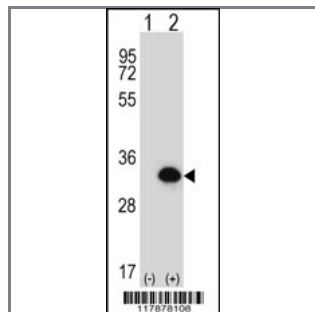
Catalog #	Applications:	Reactivity:	Accessions:
AP2894a	WB, E	H, M	P52565
Concentration:	Size:	Isotype:	Clone Name:
0.25 mg/ml	0.1 mg	Rabbit Ig	RB17878

Application Data:

Calculated MW: 23207 Da



Western blot analysis of ARHGDIA Antibody (N-term) (Cat. #AP2894a) in A2058, Jurkat, Ramos cell line and mouse lung tissue lysates (35ug/lane). ARHGDIA (arrow) was detected using the purified Pab.



Western blot analysis of ARHGDIA (arrow) using rabbit polyclonal ARHGDIA Antibody (N-term) (Cat. #AP2894a). 293 cell lysates (2 ug/lane) either nontransfected (Lane 1) or transiently transfected (Lane 2) with the ARHGDIA gene.

Gene ID:	Gene Symbol:
396	ARHGDIA

Other Names:

Rho GDP-dissociation inhibitor 1; Rho GDI 1; Rho-GDI alpha; GDIA1; ARHGDIA

Target/Specificity:

This ARHGDIA antibody is generated from rabbits immunized with a KLH conjugated synthetic peptide between 32~61 amino acids from the N-terminal region of human ARHGDIA.

Application Notes:

The suggested dilution is:
ELISA 1:1,000

Western blotting 1:100~500

Format:

Purified polyclonal antibody supplied in PBS with 0.09% (W/V) sodium azide. This antibody is purified through a protein A column, followed by peptide affinity purification.

Storage:

Maintain refrigerated at 2-8°C for up to 6 months. For long term storage store at -20°C in small aliquots to prevent freeze-thaw cycles.

Precautions:

ARHGDI Antibody (N-term) is for research use only and not for use in diagnostic or therapeutic procedures.
