

CD105 Antibody (Center E395)

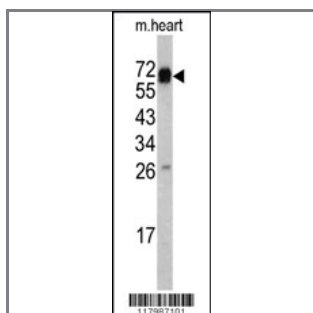
Purified Rabbit Polyclonal Antibody (Pab)

Catalog #	Applications:	Reactivity:	Accessions:
AP2880c	WB, IHC, E	H, M	P17813

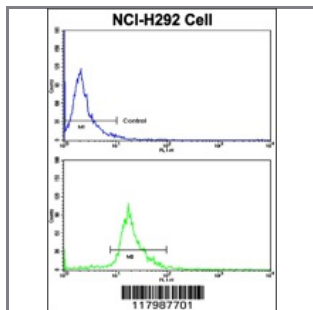
Concentration:	Size:	Isotype:	Clone Name:
0.25 mg/ml	0.1 mg	Rabbit Ig	RB17987

Application Data:

Calculated MW: 70578 Da



Western blot analysis of CD105 antibody (Center E395) (Cat. #AP2880c) in mouse heart tissue lysates (35ug/lane). CD105 (arrow) was detected using the purified Pab.



Flow cytometric analysis of NCI-H292 cells using CD105 Antibody (Center E395)(bottom histogram) compared to a negative control cell (top histogram). FITC-conjugated goat-anti-rabbit secondary antibodies were used for the analysis.



CD105 antibody (Center E395) (Cat. #AP2880c) immunohistochemistry analysis in formalin fixed and paraffin embedded mouse heart tissue followed by peroxidase conjugation of the secondary antibody and DAB staining. This data demonstrates the use of the CD105 antibody (Center E395) for immunohistochemistry. Clinical relevance has not been evaluated.

Gene ID:	Gene Symbol:
2022	ENG

Other Names:

Endoglin; CD105; END; ENG

Target/Specificity:

This CD105 antibody is generated from rabbits immunized with a KLH conjugated synthetic peptide between 387~417 amino acids from the Center region of human CD105.

Application Notes:

The suggested dilution is:

ELISA 1:1,000

Western blotting 1:50~100

Flow cytometric 1:10~50

Immunohistochemistry 1:50~100

Format:

Purified polyclonal antibody supplied in PBS with 0.09% (W/V) sodium azide. This antibody is prepared by Saturated Ammonium Sulfate (SAS) precipitation followed by dialysis against PBS.

Storage:

Maintain refrigerated at 2-8°C for up to 6 months. For long term storage store at -20°C in small aliquots to prevent freeze-thaw cycles.

Precautions:

CD105 Antibody (Center E395) is for research use only and not for use in diagnostic or therapeutic procedures.
