

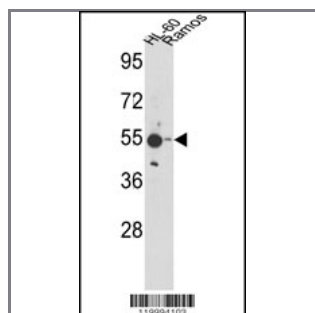
## ENOA Antibody (N-term)

### Purified Rabbit Polyclonal Antibody (Pab)

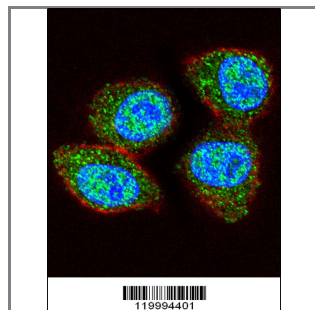
Catalog #	Applications:	Reactivity:	Accessions:
AP2879a	WB, IF, E	H	<a href="#">P06733</a>

Concentration:	Size:	Isotype:	Clone Name:
0.25 mg/ml	0.1 mg	Rabbit Ig	RB19994

#### Application Data: Calculated MW: 47169 Da



Western blot analysis of ENOA Antibody (N-term) (Cat. #AP2879a) in HL-60, Ramos cell line lysates (35ug/lane). ENOA (arrow) was detected using the purified Pab.



Confocal immunofluorescent analysis of ENOA Antibody (N-term) (Cat#AP2879a) with HeLa cell followed by Alexa Fluor 488-conjugated goat anti-rabbit IgG (green). Actin filaments have been labeled with Alexa Fluor 555 phalloidin (red). DAPI was used to stain the cell nuclear (blue).

Gene ID:	Gene Symbol:
<a href="#">2023</a>	ENO1

#### Other Names:

Alpha-enolase; 2-phospho-D-glycerate hydro-lyase; Non-neural enolase; NNE; Enolase 1; Phosphopyruvate hydratase; C-myc promoter-binding protein; MBP-1; MPB-1; Plasminogen-binding protein; MPB1; MBPB1; ENO1L1; ENO1

#### Target/Specificity:

This ENOA antibody is generated from rabbits immunized with a KLH conjugated synthetic peptide between 39~69 amino acids from the N-terminal region of ENOA.

#### Application Notes:

The suggested dilution is:

ELISA 1:1,000

Western blotting 1:50~100

Immunofluorescence 1:10~50

---

**Format:**

Purified polyclonal antibody supplied in PBS with 0.09% (W/V) sodium azide. This antibody is prepared by Saturated Ammonium Sulfate (SAS) precipitation followed by dialysis against PBS.

---

**Storage:**

Maintain refrigerated at 2-8°C for up to 6 months. For long term storage store at -20°C in small aliquots to prevent freeze-thaw cycles.

---

**Precautions:**

ENOA Antibody (N-term) is for research use only and not for use in diagnostic or therapeutic procedures.

---