

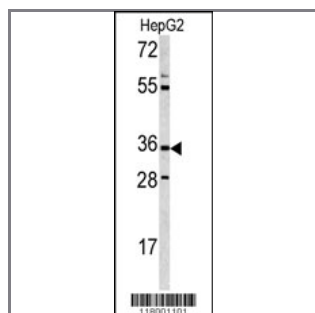
CD38 Antibody (C-term)

Purified Rabbit Polyclonal Antibody (Pab)

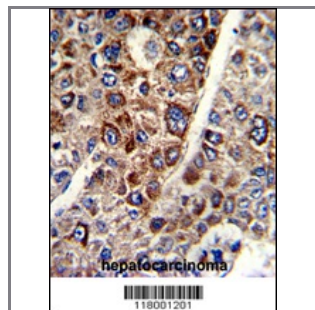
Catalog #	Applications:	Reactivity:	Accessions:
AP2878b	WB, IHC, IF, FC, E	H	P28907
Concentration:	Size:	Isotype:	Clone Name:
0.25 mg/ml	0.1 mg	Rabbit Ig	RB18001

Application Data:

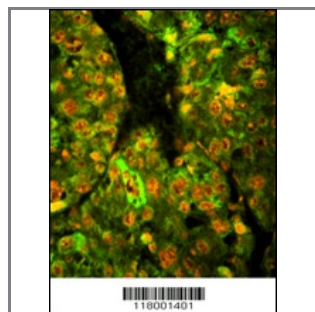
Calculated MW: 34328 Da



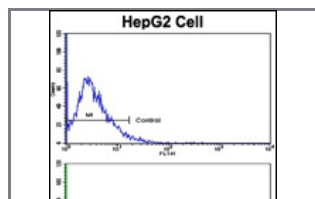
Western blot analysis of CD38 antibody (C-term) (Cat.# AP2878b) in HepG2 cell line lysates (35ug/lane). CD38 (arrow) was detected using the purified Pab.



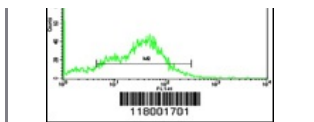
Formalin-fixed and paraffin-embedded human hepatocarcinoma with CD38 Antibody (C-term), which was peroxidase-conjugated to the secondary antibody, followed by DAB staining. This data demonstrates the use of this antibody for immunohistochemistry; clinical relevance has not been evaluated.



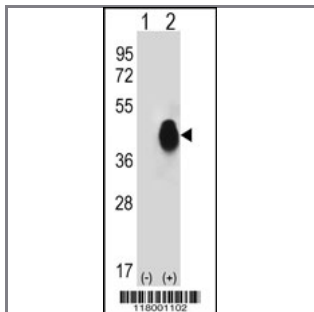
Immunofluorescence analysis of CD38 Antibody (C-term) with paraffin-embedded human hepatocarcinoma tissue . 0.05 mg/ml primary antibody was followed by FITC-conjugated goat anti-rabbit IgG (whole molecule). FITC emits green fluorescence.Red counterstaining is PI.



Flow cytometric analysis of HepG2 cells using CD38 Antibody (C-term)(bottom histogram) compared to a negative control cell (top histogram). FITC-conjugated goat-anti-rabbit secondary antibodies were used for the



analysis.



Western blot analysis of CD38 (arrow) using rabbit polyclonal CD38 Antibody (C-term) (Cat.# AP2878b). 293 cell lysates (2 ug/lane) either nontransfected (Lane 1) or transiently transfected (Lane 2) with the CD38 gene.

Gene ID:

952

Gene Symbol:

CD38

Other Names:

ADP-ribosyl cyclase 1; Cyclic ADP-ribose hydrolase 1; cADPr hydrolase 1; T10; CD38

Target/Specificity:

This CD38 antibody is generated from rabbits immunized with a KLH conjugated synthetic peptide between 253~283 amino acids from the C-terminal region of human CD38.

Application Notes:

The suggested dilution is:

ELISA 1:1,000

Western blotting 1:50~100

Immunohistochemistry 1:50~100

Immunofluorescence 1:10~50

Flow cytometric 1:10~50

Format:

Purified polyclonal antibody supplied in PBS with 0.09% (W/V) sodium azide. This antibody is prepared by Saturated Ammonium Sulfate (SAS) precipitation followed by dialysis against PBS.

Storage:

Maintain refrigerated at 2-8°C for up to 6 months. For long term storage store at -20°C in small aliquots to prevent freeze-thaw cycles.

Precautions:

CD38 Antibody (C-term) is for research use only and not for use in diagnostic or therapeutic procedures.
