

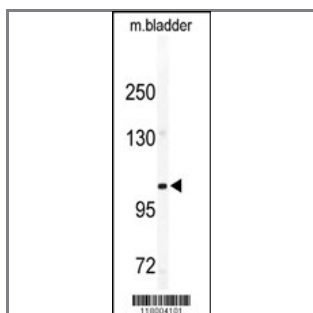
CD49e Antibody (C-term)

Purified Rabbit Polyclonal Antibody (Pab)

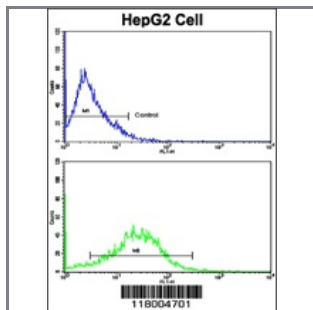
Catalog #	Applications:	Reactivity:	Accessions:
AP2876b	WB, FC, E	H, M	P08648
Concentration:	Size:	Isotype:	Clone Name:
0.25 mg/ml	0.1 mg	Rabbit Ig	RB18004

Application Data:

Calculated MW: 114536 Da



Western blot analysis of CD49e antibody (C-term) (Cat.# AP2876b) in mouse bladder tissue lysates (35ug/lane). CD49e (arrow) was detected using the purified Pab.



Flow cytometric analysis of HepG2 cells using CD49e Antibody (C-term)(bottom histogram) compared to a negative control cell (top histogram). FITC-conjugated goat-anti-rabbit secondary antibodies were used for the analysis.

Gene ID:	Gene Symbol:
3678	ITGA5

Other Names:

Integrin alpha-5; Fibronectin receptor subunit alpha; Integrin alpha-F; VLA-5; CD49 antigen-like family member E; CD_antigen=CD49e; Integrin alpha-5 heavy chain; Integrin alpha-5 light chain; ITGA5

Target/Specificity:

This CD49e antibody is generated from rabbits immunized with a KLH conjugated synthetic peptide between 803~832 amino acids from the C-terminal region of human CD49e.

Application Notes:

The suggested dilution is:

ELISA 1:1,000
Western blotting 1:50~100
Flow cytometric 1:10~50

Format:

Purified polyclonal antibody supplied in PBS with 0.09% (W/V) sodium azide. This antibody is prepared by Saturated Ammonium Sulfate (SAS) precipitation followed by dialysis against PBS.

Storage:

Maintain refrigerated at 2-8°C for up to 6 months. For long term storage store at -20°C in small aliquots to prevent freeze-thaw cycles.

Precautions:

CD49e Antibody (C-term) is for research use only and not for use in diagnostic or therapeutic procedures.
