

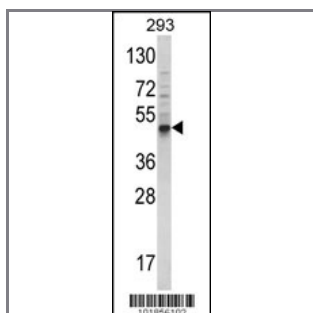
## Bmp3 Antibody (N-term)

### Purified Rabbit Polyclonal Antibody (Pab)

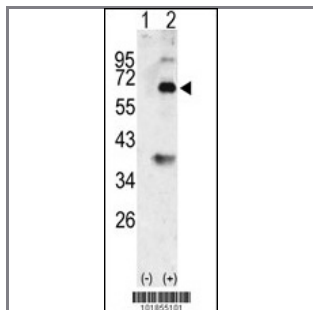
Catalog #	Applications:	Reactivity:	Accessions:
AP1714a	WB, IHC, E	H	<a href="#">P12645</a>
Concentration:	Size:	Isotype:	Clone Name:
0.25 mg/ml	0.1 mg	Rabbit Ig	RB1855-1856

#### Application Data:

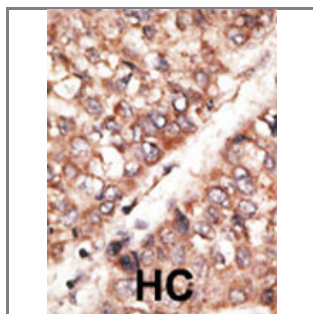
Calculated MW: 53406 Da



Western blot analysis of hBmp3-E23 (Cat. #AP1714a) in 293 cell line lysates (35ug/lane). BMP3 (arrow) was detected using the purified Pab.



Western blot analysis of Bmp3 (arrow) using rabbit polyclonal Bmp3 Antibody (N-term) (Cat.#AP1714a). 293 cell lysates (2 ug/lane) either nontransfected (Lane 1) or transiently transfected with the Bmp3 gene (Lane 2) (Origene Technologies).



Formalin-fixed and paraffin-embedded human cancer tissue reacted with the primary antibody, which was peroxidase-conjugated to the secondary antibody, followed by AEC staining. This data demonstrates the use of this antibody for immunohistochemistry; clinical relevance has not been evaluated. BC = breast carcinoma; HC = hepatocarcinoma.

Gene ID:	Gene Symbol:
<a href="#">651</a>	BMP3

#### Other Names:

**Target/Specificity:**

This Bmp3 antibody is generated from rabbits immunized with a KLH conjugated synthetic peptide between 15~44 amino acids from the N-terminal region of human Bmp3.

---

**Application Notes:**

The suggested dilution will be:

ELISA 1:1,000

Western Blot 1:100~500

Immunohistochemistry 1:50~100

---

**Format:**

Purified polyclonal antibody supplied in PBS with 0.09% (W/V) sodium azide. This antibody is purified through a protein G column, eluted with high and low pH buffers and neutralized immediately, followed by dialysis against PBS.

---

**Storage:**

Maintain refrigerated at 2-8°C for up to 6 months. For long term storage store at -20°C in small aliquots to prevent freeze-thaw cycles.

---

**Precautions:**

Bmp3 Antibody (N-term) is for research use only and not for use in diagnostic or therapeutic procedures.

---