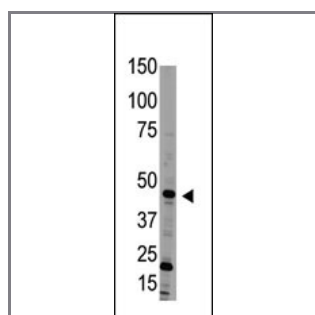


## Bmp15 Antibody (N-term)

### Purified Rabbit Polyclonal Antibody (Pab)

<b>Catalog #</b>	<b>Applications:</b>	<b>Reactivity:</b>	<b>Accessions:</b>
AP1711a	WB, E	H	<a href="#">O95972</a> , <a href="#">NP_005439</a>
<b>Concentration:</b>	<b>Size:</b>	<b>Isotype:</b>	<b>Clone Name:</b>
0.25 mg/ml	0.1 mg	Rabbit Ig	RB1869

#### Application Data: Calculated MW: 45028 Da



Western blot analysis of anti-Bmp15 Antibody (N-term) (Cat. #AP1711a) in HL60 cell line lysate (35ug/lane). Bmp15 (arrow) was detected using the purified Pab.

<b>Gene ID:</b>	<b>Gene Symbol:</b>
<a href="#">9210</a>	BMP15

#### Other Names:

bone morphogenetic protein 15; ODG2; POF4; GDF9B; BMP15

#### Target/Specificity:

This Bmp15 antibody is generated from rabbits immunized with a KLH conjugated synthetic peptide between 12~41 amino acids from the N-terminal region of human Bmp15.

#### Application Notes:

The suggested dilution is:  
ELISA 1:1,000  
Western blotting 1:100~500

#### Format:

Purified polyclonal antibody supplied in PBS with 0.09% (W/V) sodium azide. This antibody is purified through a protein G column, eluted with high and low pH buffers and neutralized immediately, followed by dialysis against PBS.

#### Storage:

Maintain refrigerated at 2-8°C for up to 6 months. For long term storage store at -20°C in small aliquots to prevent freeze-thaw cycles.

---

**Precautions:**

Bmp15 Antibody (N-term) is for research use only and not for use in diagnostic or therapeutic procedures.

---