

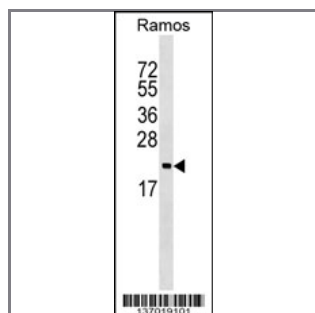
## ARF5 Antibody (Center)

### Peptide Affinity Purified Rabbit Polyclonal Antibody (Pab)

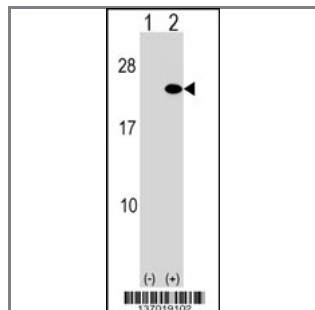
| Catalog #      | Applications: | Reactivity: | Accessions:  |
|----------------|---------------|-------------|--|
| AP17093c       | WB, E         | H           | <a href="#">NP_001653.1</a> , <a href="#">P84085</a> |
| Concentration: | Size:         | Isotype:    | Clone Name:  |
| 0.25 mg/ml     | 0.1 mg        | Rabbit Ig   | RB37019  |

#### Application Data:

Calculated MW: 20530 Da



ARF5 Antibody (Center) (Cat. #AP17093c) western blot analysis in Ramos cell line lysates (35ug/lane). This demonstrates the ARF5 antibody detected the ARF5 protein (arrow).



Western blot analysis of ARF5 (arrow) using rabbit polyclonal ARF5 Antibody (Center) (Cat. #AP17093c). 293 cell lysates (2 ug/lane) either nontransfected (Lane 1) or transiently transfected (Lane 2) with the ARF5 gene.

| Gene ID:            | Gene Symbol: |
|---------------------|--------------|
| <a href="#">381</a> | ARF5         |

#### Other Names:

ADP-ribosylation factor 5; ARF5;

#### Target/Specificity:

This ARF5 antibody is generated from rabbits immunized with a KLH conjugated synthetic peptide between 79-108 amino acids from the Central region of human ARF5.

#### Application Notes:

The suggested dilution is:  
ELISA 1:1,000

Western blotting 1:100~500

---

**Format:**

Purified polyclonal antibody supplied in PBS with 0.09% (W/V) sodium azide. This antibody is purified through a protein A column, followed by peptide affinity purification.

---

**Storage:**

ARF5 Antibody (Center) can be refrigerated at 2-8°C for up to 6 months. For long term storage, place the at -20°C.

---

**Precautions:**

ARF5 Antibody (Center) is for research use only and not for use in diagnostic or therapeutic procedures.

---