

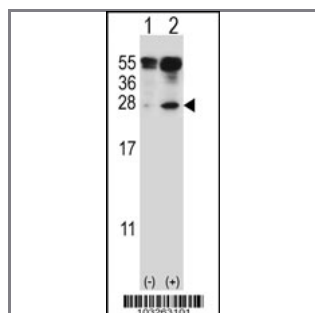
## IL-27 Antibody (Center)

### Purified Rabbit Polyclonal Antibody (Pab)

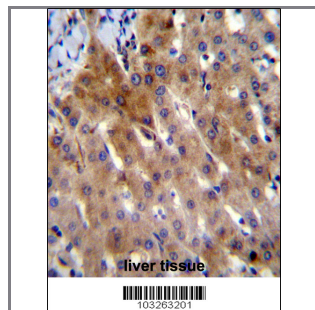
<b>Catalog #</b>	<b>Applications:</b>	<b>Reactivity:</b>	<b>Accessions:</b>
AP1707b	WB, IHC, E	H, M	<a href="#">Q8TAD2</a>
<b>Concentration:</b>	<b>Size:</b>	<b>Isotype:</b>	<b>Clone Name:</b>
0.25 mg/ml	0.1 mg	Rabbit Ig	RB3263

#### Application Data:

**Calculated MW: 21893 Da**



Western blot analysis of IL27 (arrow) using rabbit polyclonal IL27 Antibody (C71) (Cat. #AP1707b). 293 cell lysates (2 ug/lane) either nontransfected (Lane 1) or transiently transfected (Lane 2) with the IL27 gene.



IL-27 Antibody (Center) (Cat. #AP1707b) immunohistochemistry analysis in formalin fixed and paraffin embedded human liver tissue followed by peroxidase conjugation of the secondary antibody and DAB staining. This data demonstrates the use of IL-27 Antibody (Center) for immunohistochemistry. Clinical relevance has not been evaluated.

<b>Gene ID:</b>	<b>Gene Symbol:</b>
<a href="#">53342</a>	IL17D

#### Other Names:

#### Target/Specificity:

This IL-27 antibody is generated from rabbits immunized with a KLH conjugated synthetic peptide selected from the center region of human L27.

#### Application Notes:

The suggested dilution is:

ELISA 1:1,000

Western blotting 1:50~100

**Format:**

Purified polyclonal antibody supplied in PBS with 0.09% (W/V) sodium azide. This antibody is purified through a protein G column, eluted with high and low pH buffers and neutralized immediately, followed by dialysis against PBS.

---

**Storage:**

Maintain refrigerated at 2-8°C for up to 6 months. For long term storage store at -20°C in small aliquots to prevent freeze-thaw cycles.

---

**Precautions:**

IL-27 Antibody (Center) is for research use only and not for use in diagnostic or therapeutic procedures.

---