

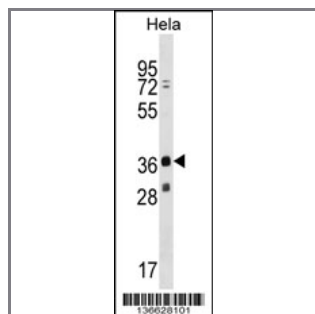
## MAGEB16 Antibody (C-term)

### Peptide Affinity Purified Rabbit Polyclonal Antibody (Pab)

Catalog #	Applications:	Reactivity:	Accessions:
AP16966b	WB, E	H	<a href="#">A2A368</a> , <a href="#">NP_001093391.1</a>
Concentration:	Size:	Isotype:	Clone Name:
0.25 mg/ml	0.1 mg	Rabbit Ig	RB36628

#### Application Data:

Calculated MW: 36178 Da



MAGEB16 Antibody (C-term) (Cat. #AP16966b) western blot analysis in HeLa cell line lysates (35ug/lane). This demonstrates the MAGEB16 antibody detected the MAGEB16 protein (arrow).

Gene ID:	Gene Symbol:
<a href="#">139604</a>	MAGEB16

#### Other Names:

Melanoma-associated antigen B16;MAGEB16;

#### Target/Specificity:

This MAGEB16 antibody is generated from rabbits immunized with a KLH conjugated synthetic peptide between 228-258 amino acids from the C-terminal region of human MAGEB16.

#### Application Notes:

The suggested dilution is:

ELISA 1:1,000

Western blotting 1:100~500

#### Format:

Purified polyclonal antibody supplied in PBS with 0.09% (W/V) sodium azide. This antibody is purified through a protein A column, followed by peptide affinity purification.

#### Storage:

MAGEB16 Antibody (C-term) can be refrigerated at 2-8°C for up to 6 months. For long term storage, place the at -20°C.

---

**Precautions:**

MAGEB16 Antibody (C-term) is for research use only and not for use in diagnostic or therapeutic procedures.

---