

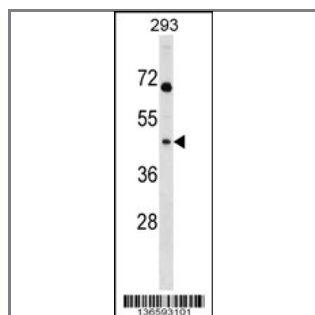
MRPL39 Antibody (C-term)

Peptide Affinity Purified Rabbit Polyclonal Antibody (Pab)

Catalog #	Applications:	Reactivity:	Accessions:
AP16957b	WB, E	H	Q9NYK5 , NP_059142.2 , NP_542984.2
Concentration:	Size:	Isotype:	Clone Name:
0.25 mg/ml	0.1 mg	Rabbit Ig	RB36593

Application Data:

Calculated MW: 38712 Da



MRPL39 Antibody (C-term) (Cat. #AP16957b) western blot analysis in 293 cell line lysates (35ug/lane). This demonstrates the MRPL39 antibody detected the MRPL39 protein (arrow).

Gene ID:	Gene Symbol:
54148	MRPL39

Other Names:

39S ribosomal protein L39, mitochondrial;MRPL39;C21orf92; MRPL5; RPML5

Target/Specificity:

This MRPL39 antibody is generated from rabbits immunized with a KLH conjugated synthetic peptide between 301-330 amino acids from the C-terminal region of human MRPL39.

Application Notes:

The suggested dilution is:

ELISA 1:1,000

Western blotting 1:100~500

Format:

Purified polyclonal antibody supplied in PBS with 0.09% (W/V) sodium azide. This antibody is purified through a protein A column, followed by peptide affinity purification.

Storage:

MRPL39 Antibody (C-term) can be refrigerated at 2-8°C for up to 6 months. For long term storage, place the at -20°C.

Precautions:

MRPL39 Antibody (C-term) is for research use only and not for use in diagnostic or therapeutic procedures.
