

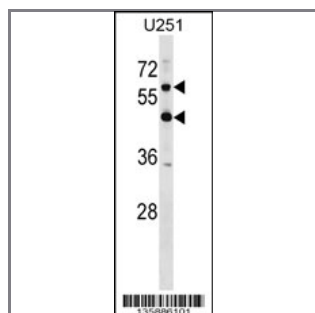
CSPG5 Antibody (C-term)

Peptide Affinity Purified Rabbit Polyclonal Antibody (Pab)

Catalog #	Applications:	Reactivity:	Accessions:
AP16908b	WB, E	H	NP_006565.2 , O95196
Concentration:	Size:	Isotype:	Clone Name:
0.25 mg/ml	0.1 mg	Rabbit Ig	RB35886

Application Data:

Calculated MW: 60016 Da



CSPG5 Antibody (C-term) (Cat. #AP16908b) western blot analysis in U251 cell line lysates (35ug/lane). This demonstrates the CSPG5 antibody detected the CSPG5 protein (arrow).

Gene ID:	Gene Symbol:
10675	CSPG5

Other Names:

Chondroitin sulfate proteoglycan 5;CSPG5;CALEB; NGC

Target/Specificity:

This CSPG5 antibody is generated from rabbits immunized with a KLH conjugated synthetic peptide between 529-559 amino acids from the C-terminal region of human CSPG5.

Application Notes:

The suggested dilution is:

ELISA 1:1,000

Western blotting 1:100~500

Format:

Purified polyclonal antibody supplied in PBS with 0.09% (W/V) sodium azide. This antibody is purified through a protein A column, followed by peptide affinity purification.

Storage:

CSPG5 Antibody (C-term) can be refrigerated at 2-8°C for up to 6 months. For long term storage,

place the at -20°C.

Precautions:

CSPG5 Antibody (C-term) is for research use only and not for use in diagnostic or therapeutic procedures.
