

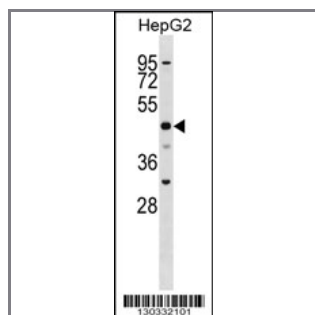
SLC2A9 Antibody (N-term)

Peptide Affinity Purified Rabbit Polyclonal Antibody (Pab)

Catalog #	Applications:	Reactivity:	Accessions:
AP16871a	WB, E	H	NP_064425.2 , NP_001001290.1 , Q9NRM0
Concentration:	Size:	Isotype:	Clone Name:
0.25 mg/ml	0.1 mg	Rabbit Ig	RB30332

Application Data:

Calculated MW: 58702 Da



SLC2A9 Antibody (N-term) (Cat. #AP16871a) western blot analysis in HepG2 cell line lysates (35ug/lane). This demonstrates the SLC2A9 antibody detected the SLC2A9 protein (arrow).

Gene ID:	Gene Symbol:
56606	SLC2A9

Other Names:

Solute carrier family 2, facilitated glucose transporter member 9;SLC2A9;GLUT9

Target/Specificity:

This SLC2A9 antibody is generated from rabbits immunized with a KLH conjugated synthetic peptide between 74-104 amino acids from the N-terminal region of human SLC2A9.

Application Notes:

The suggested dilution is:

ELISA 1:1,000

Western blotting 1:100~500

Format:

Purified polyclonal antibody supplied in PBS with 0.09% (W/V) sodium azide. This antibody is purified through a protein A column, followed by peptide affinity purification.

Storage:

SLC2A9 Antibody (N-term) can be refrigerated at 2-8°C for up to 6 months. For long term storage, place the at -20°C.

Precautions:

SLC2A9 Antibody (N-term) is for research use only and not for use in diagnostic or therapeutic procedures.
