

## POLR1B Antibody (N-term)

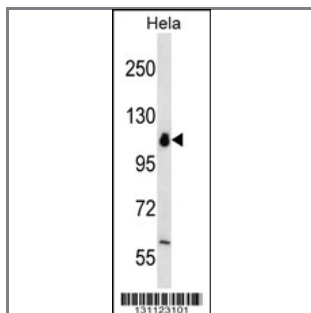
Peptide Affinity Purified Rabbit Polyclonal Antibody (Pab)

Catalog #	Applications:	Reactivity:	Accessions:
AP12495a	WB, IHC, E	H	<a href="#">Q9H9Y6</a> , <a href="#">NP_061887.2</a> , <a href="#">NP_001131076.1</a>

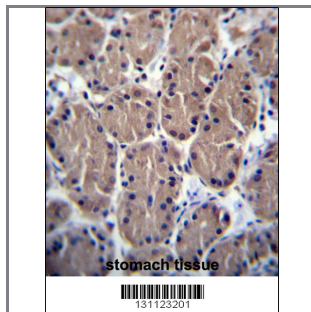
Concentration:	Size:	Isotype:	Clone Name:
0.25 mg/ml	0.1 mg	Rabbit Ig	RB31123

### Application Data:

Calculated MW: 128229 Da



POLR1B Antibody (N-term) (Cat. #AP12495a) western blot analysis in HeLa cell line lysates (35ug/lane). This demonstrates the POLR1B antibody detected the POLR1B protein (arrow).



POLR1B Antibody (N-term) (Cat. #AP12495a) immunohistochemistry analysis in formalin fixed and paraffin embedded human stomach tissue followed by peroxidase conjugation of the secondary antibody and DAB staining. This data demonstrates the use of POLR1B Antibody (N-term) for immunohistochemistry. Clinical relevance has not been evaluated.

Gene ID:	Gene Symbol:
<a href="#">84172</a>	POLR1B

### Other Names:

DNA-directed RNA polymerase I subunit RPA2;POLR1B;

### Target/Specificity:

This POLR1B antibody is generated from rabbits immunized with a KLH conjugated synthetic peptide between 88-117 amino acids from the N-terminal region of human POLR1B.

### Application Notes:

The suggested dilution is:

ELISA 1:1,000

Western blotting 1:100~500

Immunohistochemistry 1:10~50

---

**Format:**

Purified polyclonal antibody supplied in PBS with 0.09% (W/V) sodium azide. This antibody is purified through a protein A column, followed by peptide affinity purification.

---

**Storage:**

POLR1B Antibody (N-term) can be refrigerated at 2-8°C for up to 6 months. For long term storage, place the at -20°C.

---

**Precautions:**

POLR1B Antibody (N-term) is for research use only and not for use in diagnostic or therapeutic procedures.

---