

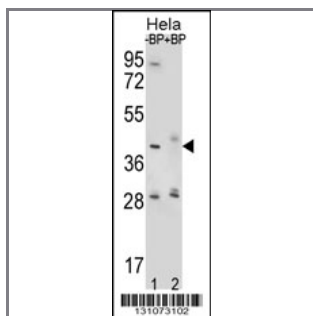
## HYAL2 Antibody (Center)

### Peptide Affinity Purified Rabbit Polyclonal Antibody (Pab)

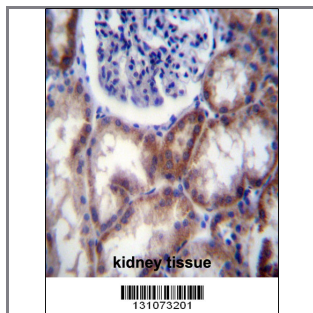
Catalog #	Applications:	Reactivity:	Accessions:
AP12491c	WB, IHC, E	H	<a href="#">NP_003764.3</a> , <a href="#">Q12891</a> , <a href="#">NP_149348.2</a>
Concentration:	Size:	Isotype:	Clone Name:
0.25 mg/ml	0.1 mg	Rabbit Ig	RB31073

#### Application Data:

Calculated MW: 53860 Da



Western blot analysis of HYAL2 Antibody (Center) Pab (Cat. #AP12491c) pre-incubated without (lane 1) and with (lane 2) blocking peptide in Hela cell line lysate. HYAL2 Antibody (Center) (arrow) was detected using the purified Pab (1:60/250 dilution).



HYAL2 Antibody (Center) (Cat. #AP12491c) immunohistochemistry analysis in formalin fixed and paraffin embedded human kidney tissue followed by peroxidase conjugation of the secondary antibody and DAB staining. This data demonstrates the use of HYAL2 Antibody (Center) for immunohistochemistry. Clinical relevance has not been evaluated.

Gene ID:	Gene Symbol:
<a href="#">8692</a>	HYAL2

#### Other Names:

Hyaluronidase-2;HYAL2;LUCA2

#### Target/Specificity:

This HYAL2 antibody is generated from rabbits immunized with a KLH conjugated synthetic peptide between 127-157 amino acids from the Central region of human HYAL2.

#### Application Notes:

The suggested dilution is:

ELISA 1:1,000  
Western blotting 1:100~500  
Immunohistochemistry 1:10~50

---

**Format:**

Purified polyclonal antibody supplied in PBS with 0.09% (W/V) sodium azide. This antibody is purified through a protein A column, followed by peptide affinity purification.

---

**Storage:**

HYAL2 Antibody (Center) can be refrigerated at 2-8°C for up to 6 months. For long term storage, place the at -20°C.

---

**Precautions:**

HYAL2 Antibody (Center) is for research use only and not for use in diagnostic or therapeutic procedures.

---