

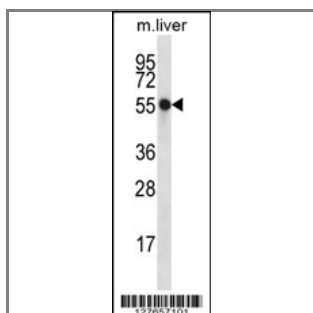
NXN Antibody (Center)

Peptide Affinity Purified Rabbit Polyclonal Antibody (Pab)

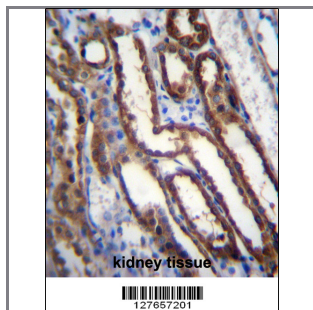
Catalog #	Applications:	Reactivity:	Accessions:
AP12483c	WB, IHC, E	H(predict), M	Q6DKJ4 , NP_071908.2
Concentration:	Size:	Isotype:	Clone Name:
0.25 mg/ml	0.1 mg	Rabbit Ig	RB27657

Application Data:

Calculated MW: 48392 Da



NXN Antibody (Center) (Cat. #AP12483c) western blot analysis in mouse liver tissue lysates (35ug/lane). This demonstrates the NXN antibody detected the NXN protein (arrow).



NXN Antibody (Center) (Cat. #AP12483c) immunohistochemistry analysis in formalin fixed and paraffin embedded human kidney tissue followed by peroxidase conjugation of the secondary antibody and DAB staining. This data demonstrates the use of NXN Antibody (Center) for immunohistochemistry. Clinical relevance has not been evaluated.

Gene ID:	Gene Symbol:
64359	NXN

Other Names:

Nucleoredoxin;NXN;NRX

Target/Specificity:

This NXN antibody is generated from rabbits immunized with a KLH conjugated synthetic peptide between 220-249 amino acids from the Central region of human NXN.

Application Notes:

The suggested dilution is:
ELISA 1:1,000

Western blotting 1:100~500
Immunohistochemistry 1:10~50

Format:

Purified polyclonal antibody supplied in PBS with 0.09% (W/V) sodium azide. This antibody is purified through a protein A column, followed by peptide affinity purification.

Storage:

NXN Antibody (Center) can be refrigerated at 2-8°C for up to 6 months. For long term storage, place the at -20°C.

Precautions:

NXN Antibody (Center) is for research use only and not for use in diagnostic or therapeutic procedures.
