

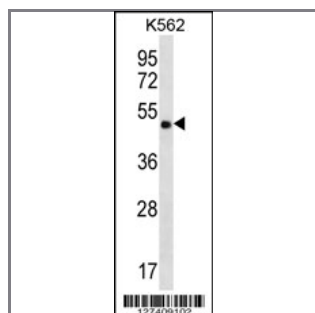
CCDC71 Antibody (C-term)

Peptide Affinity Purified Rabbit Polyclonal Antibody (Pab)

Catalog #	Applications:	Reactivity:	Accessions:
AP12481b	WB, E	H	NP_075054.3 , Q8IV32
Concentration:	Size:	Isotype:	Clone Name:
0.25 mg/ml	0.1 mg	Rabbit Ig	RB27409

Application Data:

Calculated MW: 49618 Da



CCDC71 Antibody (C-term) (Cat. #AP12481b) western blot analysis in K562 cell line lysates (35ug/lane). This demonstrates the CCDC71 antibody detected the CCDC71 protein (arrow).

Gene ID:	Gene Symbol:
64925	CCDC71

Other Names:

Coiled-coil domain-containing protein 71;CCDC71;

Target/Specificity:

This CCDC71 antibody is generated from rabbits immunized with a KLH conjugated synthetic peptide between 349-379 amino acids from the C-terminal region of human CCDC71.

Application Notes:

The suggested dilution is:

ELISA 1:1,000

Western blotting 1:100~500

Format:

Purified polyclonal antibody supplied in PBS with 0.09% (W/V) sodium azide. This antibody is purified through a protein A column, followed by peptide affinity purification.

Storage:

CCDC71 Antibody (C-term) can be refrigerated at 2-8°C for up to 6 months. For long term

storage, place the at -20°C.

Precautions:

CCDC71 Antibody (C-term) is for research use only and not for use in diagnostic or therapeutic procedures.
