

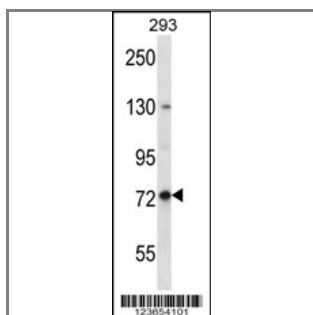
SPG7 Antibody (Center)

Peptide Affinity Purified Rabbit Polyclonal Antibody (Pab)

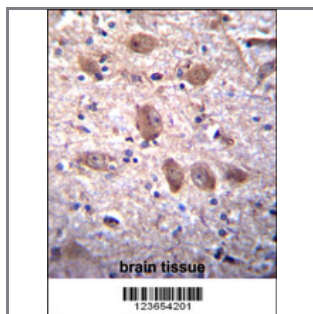
Catalog #	Applications:	Reactivity:	Accessions:
AP12476c	WB, IHC, E	H	Q9UQ90 , NP_955399.1 , NP_003110.1
Concentration:	Size:	Isotype:	Clone Name:
0.25 mg/ml	0.1 mg	Rabbit Ig	RB23654

Application Data:

Calculated MW: 88235 Da



SPG7 Antibody (Center) (Cat. #AP12476c) western blot analysis in 293 cell line lysates (35ug/lane). This demonstrates the SPG7 antibody detected the SPG7 protein (arrow).



SPG7 Antibody (Center) (Cat. #AP12476c) immunohistochemistry analysis in formalin fixed and paraffin embedded human brain tissue followed by peroxidase conjugation of the secondary antibody and DAB staining. This data demonstrates the use of SPG7 Antibody (Center) for immunohistochemistry. Clinical relevance has not been evaluated.

Gene ID:	Gene Symbol:
6687	SPG7

Other Names:

Paraplegin;SPG7;CAR; CMAR; PGN

Target/Specificity:

This SPG7 antibody is generated from rabbits immunized with a KLH conjugated synthetic peptide between 114-141 amino acids from the Central region of human SPG7.

Application Notes:

The suggested dilution is:

ELISA 1:1,000

Western blotting 1:100~500

Immunohistochemistry 1:10~50

Format:

Purified polyclonal antibody supplied in PBS with 0.09% (W/V) sodium azide. This antibody is purified through a protein A column, followed by peptide affinity purification.

Storage:

SPG7 Antibody (Center) can be refrigerated at 2-8°C for up to 6 months. For long term storage, place the at -20°C.

Precautions:

SPG7 Antibody (Center) is for research use only and not for use in diagnostic or therapeutic procedures.
