

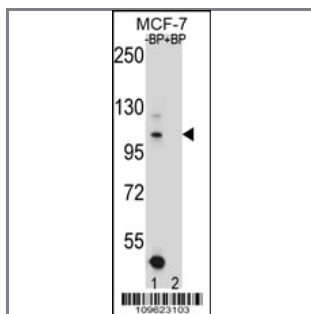
HIPK1 Antibody (C-term)

Peptide Affinity Purified Rabbit Polyclonal Antibody (Pab)

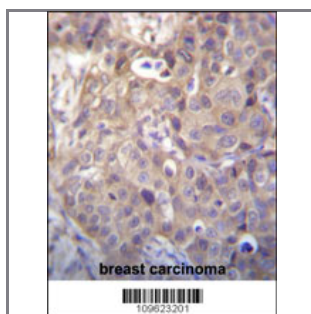
Catalog #	Applications:	Reactivity:	Accessions:
AP12465b	WB, IHC, E	H	NP_938009.1 , NP_938010.1 , Q86Z02 , NP_852003.1 , NP_689909.2
Concentration:	Size:	Isotype:	Clone Name:
0.25 mg/ml	0.1 mg	Rabbit Ig	RB09623

Application Data:

Calculated MW: 130843 Da



Western blot analysis of HIPK1 Antibody (C-term) Pab (Cat. #AP12465b) pre-incubated without (lane 1) and with (lane 2) blocking peptide in MCF-7 cell line lysate. HIPK1 Antibody (C-term) (arrow) was detected using the purified Pab (1:60/250 dilution).



HIPK1 Antibody (C-term) (Cat. #AP12465b) immunohistochemistry analysis in formalin fixed and paraffin embedded human breast carcinoma followed by peroxidase conjugation of the secondary antibody and DAB staining. This data demonstrates the use of HIPK1 Antibody (C-term) for immunohistochemistry. Clinical relevance has not been evaluated.

Gene ID:	Gene Symbol:
204851	HIPK1

Other Names:

Homeodomain-interacting protein kinase 1;HIPK1;KIAA0630

Target/Specificity:

This HIPK1 antibody is generated from rabbits immunized with a KLH conjugated synthetic peptide between 892-922 amino acids from the C-terminal region of human HIPK1.

Application Notes:

The suggested dilution is:

ELISA 1:1,000

Western blotting 1:100~500

Immunohistochemistry 1:10~50

Format:

Purified polyclonal antibody supplied in PBS with 0.09% (W/V) sodium azide. This antibody is purified through a protein A column, followed by peptide affinity purification.

Storage:

HIPK1 Antibody (C-term) can be refrigerated at 2-8°C for up to 6 months. For long term storage, place the at -20°C.

Precautions:

HIPK1 Antibody (C-term) is for research use only and not for use in diagnostic or therapeutic procedures.
