

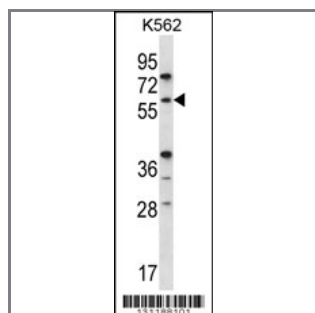
RAG2 Antibody (C-term)

Peptide Affinity Purified Rabbit Polyclonal Antibody (Pab)

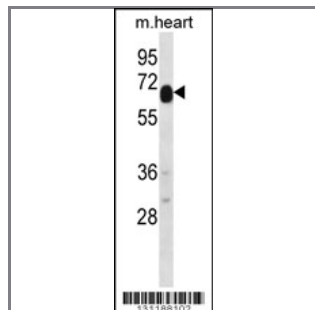
Catalog #	Applications:	Reactivity:	Accessions:
AP12445b	WB, IHC, E	H, M	P55895 , NP_000527.2
Concentration:	Size:	Isotype:	Clone Name:
0.25 mg/ml	0.1 mg	Rabbit Ig	RB31188

Application Data:

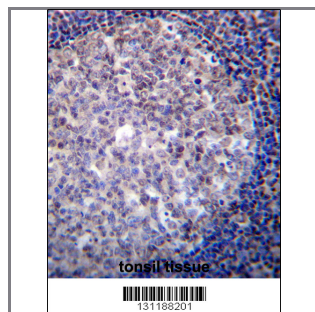
Calculated MW: 59241 Da



RAG2 Antibody (C-term) (Cat. #AP12445b) western blot analysis in K562 cell line lysates (35ug/lane). This demonstrates the RAG2 antibody detected the RAG2 protein (arrow).



RAG2 Antibody (C-term) (Cat. #AP12445b) western blot analysis in mouse heart tissue lysates (35ug/lane). This demonstrates the RAG2 antibody detected the RAG2 protein (arrow).



RAG2 Antibody (C-term) (Cat. #AP12445b) immunohistochemistry analysis in formalin fixed and paraffin embedded human tonsil tissue followed by peroxidase conjugation of the secondary antibody and DAB staining. This data demonstrates the use of RAG2 Antibody (C-term) for immunohistochemistry. Clinical relevance has not been evaluated.

Gene ID:	Gene Symbol:
5897	RAG2

Other Names:

RAG2;V(D)J recombination-activating protein 2;

Target/Specificity:

This RAG2 antibody is generated from rabbits immunized with a KLH conjugated synthetic peptide between 348-377 amino acids from the C-terminal region of human RAG2.

Application Notes:

The suggested dilution is:

ELISA 1:1,000

Western blotting 1:100~500

Immunohistochemistry 1:10~50

Format:

Purified polyclonal antibody supplied in PBS with 0.09% (W/V) sodium azide. This antibody is purified through a protein A column, followed by peptide affinity purification.

Storage:

RAG2 Antibody (C-term) can be refrigerated at 2-8°C for up to 6 months. For long term storage, place the at -20°C.

Precautions:

RAG2 Antibody (C-term) is for research use only and not for use in diagnostic or therapeutic procedures.
