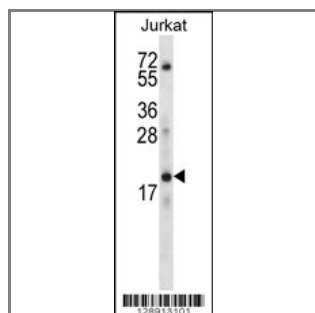


KRTAP13-3 Antibody (C-term)

Peptide Affinity Purified Rabbit Polyclonal Antibody (Pab)

Catalog #	Applications:	Reactivity:	Accessions:
AP12430b	WB, E	H	NP_853653.1 , Q3SY46
Concentration:	Size:	Isotype:	Clone Name:
0.25 mg/ml	0.1 mg	Rabbit Ig	RB28913

Application Data: **Calculated MW: 19236 Da**



KRTAP13-3 Antibody (C-term) (Cat. #AP12430b) western blot analysis in Jurkat cell line lysates (35ug/lane). This demonstrates the KRTAP13-3 antibody detected the KRTAP13-3 protein (arrow).

Gene ID: [337960](#)
Gene Symbol: KRTAP13-3

Other Names:

KRTAP13-3;Keratin-associated protein 13-3;KAP13.3

Target/Specificity:

This KRTAP13-3 antibody is generated from rabbits immunized with a KLH conjugated synthetic peptide between 107-135 amino acids from the C-terminal region of human KRTAP13-3.

Application Notes:

The suggested dilution is:
ELISA 1:1,000
Western blotting 1:100~500

Format:

Purified polyclonal antibody supplied in PBS with 0.09% (W/V) sodium azide. This antibody is purified through a protein A column, followed by peptide affinity purification.

Storage:

KRTAP13-3 Antibody (C-term) can be refrigerated at 2-8°C for up to 6 months. For long term

storage, place the at -20°C.

Precautions:

KRTAP13-3 Antibody (C-term) is for research use only and not for use in diagnostic or therapeutic procedures.
