

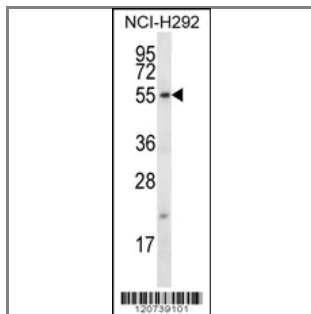
FBXO15 Antibody (N-term)

Peptide Affinity Purified Rabbit Polyclonal Antibody (Pab)

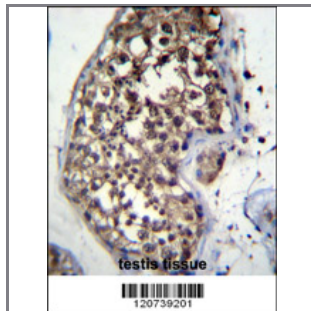
Catalog #	Applications:	Reactivity:	Accessions:
AP12418a	WB, IHC, E	H	NP_689889.1 , Q8NCQ5
Concentration:	Size:	Isotype:	Clone Name:
0.25 mg/ml	0.1 mg	Rabbit Ig	RB20739

Application Data:

Calculated MW: 49450 Da



FBXO15 Antibody (N-term) (Cat. #AP12418a) western blot analysis in NCI-H292 cell line lysates (35ug/lane). This demonstrates the FBXO15 antibody detected the FBXO15 protein (arrow).



FBXO15 Antibody (N-term) (Cat. #AP12418a) immunohistochemistry analysis in formalin fixed and paraffin embedded human testis tissue followed by peroxidase conjugation of the secondary antibody and DAB staining. This data demonstrates the use of FBXO15 Antibody (N-term) for immunohistochemistry. Clinical relevance has not been evaluated.

Gene ID:	Gene Symbol:
201456	FBXO15

Other Names:

FBXO15;F-box only protein 15;FBX15

Target/Specificity:

This FBXO15 antibody is generated from rabbits immunized with a KLH conjugated synthetic peptide between 53-82 amino acids from the N-terminal region of human FBXO15.

Application Notes:

The suggested dilution is:

ELISA 1:1,000
Western blotting 1:100~500
Immunohistochemistry 1:10~50

Format:

Purified polyclonal antibody supplied in PBS with 0.09% (W/V) sodium azide. This antibody is purified through a protein A column, followed by peptide affinity purification.

Storage:

FBXO15 Antibody (N-term) can be refrigerated at 2-8°C for up to 6 months. For long term storage, place the at -20°C.

Precautions:

FBXO15 Antibody (N-term) is for research use only and not for use in diagnostic or therapeutic procedures.
