

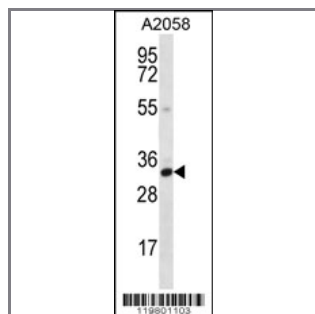
CNN2 Antibody (N-term)

Peptide Affinity Purified Rabbit Polyclonal Antibody (Pab)

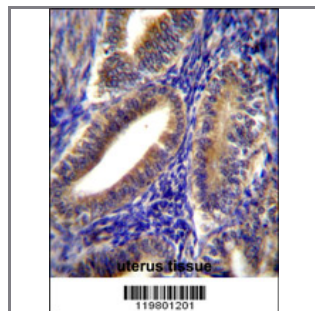
Catalog #	Applications:	Reactivity:	Accessions:
AP12417a	WB, IHC, E	H	NP_004359.1 , NP_958434.1 , Q99439
Concentration:	Size:	Isotype:	Clone Name:
0.25 mg/ml	0.1 mg	Rabbit Ig	RB19801

Application Data:

Calculated MW: 33697 Da



CNN2 Antibody (N-term) (Cat. #AP12417a) western blot analysis in A2058 cell line lysates (35ug/lane). This demonstrates the CNN2 antibody detected the CNN2 protein (arrow).



CNN2 Antibody (N-term) (Cat. #AP12417a) immunohistochemistry analysis in formalin fixed and paraffin embedded human uterus tissue followed by peroxidase conjugation of the secondary antibody and DAB staining. This data demonstrates the use of CNN2 Antibody (N-term) for immunohistochemistry. Clinical relevance has not been evaluated.

Gene ID:	Gene Symbol:
1265	CNN2

Other Names:

CNN2; Calponin-2;

Target/Specificity:

This CNN2 antibody is generated from rabbits immunized with a KLH conjugated synthetic peptide between 8-36 amino acids from the N-terminal region of human CNN2.

Application Notes:

The suggested dilution is:

ELISA 1:1,000
Western blotting 1:100~500
Immunohistochemistry 1:10~50

Format:

Purified polyclonal antibody supplied in PBS with 0.09% (W/V) sodium azide. This antibody is purified through a protein A column, followed by peptide affinity purification.

Storage:

CNN2 Antibody (N-term) can be refrigerated at 2-8°C for up to 6 months. For long term storage, place the at -20°C.

Precautions:

CNN2 Antibody (N-term) is for research use only and not for use in diagnostic or therapeutic procedures.
