

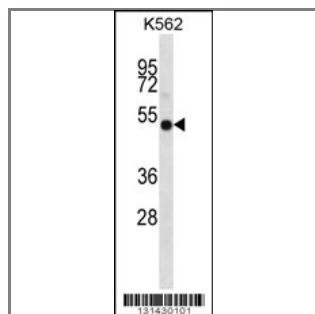
I23O2 Antibody (C-term)

Peptide Affinity Purified Rabbit Polyclonal Antibody (Pab)

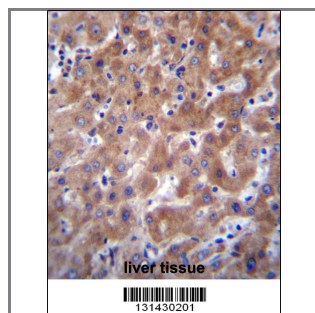
Catalog #	Applications:	Reactivity:	Accessions:
AP12406b	WB, IHC, E	H	Q6ZQW0 , NP_919270.2
Concentration:	Size:	Isotype:	Clone Name:
0.25 mg/ml	0.1 mg	Rabbit Ig	RB31430

Application Data:

Calculated MW: 45424 Da



I23O2 Antibody (C-term) (Cat. #AP12406b) western blot analysis in K562 cell line lysates (35ug/lane). This demonstrates the I23O2 antibody detected the I23O2 protein (arrow).



I23O2 Antibody (C-term) (Cat. #AP12406b) immunohistochemistry analysis in formalin fixed and paraffin embedded human liver tissue followed by peroxidase conjugation of the secondary antibody and DAB staining. This data demonstrates the use of I23O2 Antibody (C-term) for immunohistochemistry. Clinical relevance has not been evaluated.

Gene ID:	Gene Symbol:
169355	IDO2

Other Names:

IDO2; Indoleamine 2,3-dioxygenase 2; INDOL1

Target/Specificity:

This I23O2 antibody is generated from rabbits immunized with a KLH conjugated synthetic peptide between 274-303 amino acids from the C-terminal region of human I23O2.

Application Notes:

The suggested dilution is:

ELISA 1:1,000
Western blotting 1:100~500
Immunohistochemistry 1:10~50

Format:

Purified polyclonal antibody supplied in PBS with 0.09% (W/V) sodium azide. This antibody is purified through a protein A column, followed by peptide affinity purification.

Storage:

I23O2 Antibody (C-term) can be refrigerated at 2-8°C for up to 6 months. For long term storage, place the at -20°C.

Precautions:

I23O2 Antibody (C-term) is for research use only and not for use in diagnostic or therapeutic procedures.
