

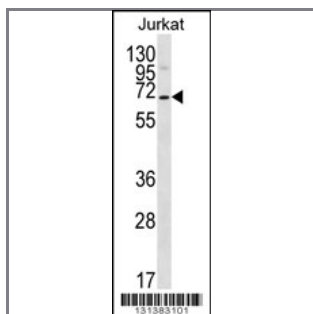
PSAPL1 Antibody (N-term)

Peptide Affinity Purified Rabbit Polyclonal Antibody (Pab)

Catalog #	Applications:	Reactivity:	Accessions:
AP12400a	WB, E	H	Q6NUJ1 , NP_001078851.1
Concentration:	Size:	Isotype:	Clone Name:
0.25 mg/ml	0.1 mg	Rabbit Ig	RB31383

Application Data:

Calculated MW: 56627 Da



PSAPL1 Antibody (N-term) (Cat. #AP12400a) western blot analysis in Jurkat cell line lysates (35ug/lane). This demonstrates the PSAPL1 antibody detected the PSAPL1 protein (arrow).

Gene ID:	Gene Symbol:
768239	PSAPL1

Other Names:

PSAPL1;Proactivator polypeptide-like 1;

Target/Specificity:

This PSAPL1 antibody is generated from rabbits immunized with a KLH conjugated synthetic peptide between 137-166 amino acids from the N-terminal region of human PSAPL1.

Application Notes:

The suggested dilution is:

ELISA 1:1,000

Western blotting 1:100~500

Format:

Purified polyclonal antibody supplied in PBS with 0.09% (W/V) sodium azide. This antibody is purified through a protein A column, followed by peptide affinity purification.

Storage:

PSAPL1 Antibody (N-term) can be refrigerated at 2-8°C for up to 6 months. For long term storage, place the at -20°C.

Precautions:

PSAPL1 Antibody (N-term) is for research use only and not for use in diagnostic or therapeutic procedures.
