

SLC16A3 Antibody (C-term)

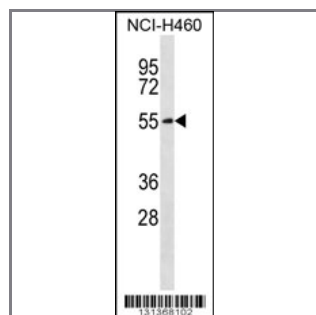
Peptide Affinity Purified Rabbit Polyclonal Antibody (Pab)

Catalog #	Applications:	Reactivity:	Accessions:
AP12397b	WB, IHC, E	H	NP_001035887.1 , NP_001035888.1 , O15427 , NP_004198.1

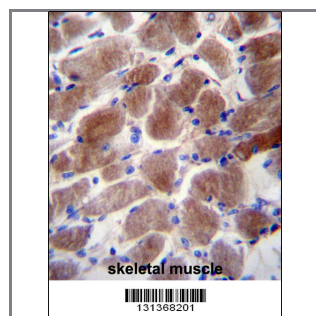
Concentration:	Size:	Isotype:	Clone Name:
0.25 mg/ml	0.1 mg	Rabbit Ig	RB31368

Application Data:

Calculated MW: 49469 Da



SLC16A3 Antibody (C-term) (Cat. #AP12397b) western blot analysis in NCI-H460 cell line lysates (35ug/lane). This demonstrates the SLC16A3 antibody detected the SLC16A3 protein (arrow).



SLC16A3 Antibody (C-term) (Cat. #AP12397b) immunohistochemistry analysis in formalin fixed and paraffin embedded human skeletal muscle followed by peroxidase conjugation of the secondary antibody and DAB staining. This data demonstrates the use of SLC16A3 Antibody (C-term) for immunohistochemistry. Clinical relevance has not been evaluated.

Gene ID:	Gene Symbol:
9123	SLC16A3

Other Names:

SLC16A3; Monocarboxylate transporter 4; MCT3; MCT4

Target/Specificity:

This SLC16A3 antibody is generated from rabbits immunized with a KLH conjugated synthetic peptide between 440-470 amino acids from the C-terminal region of human SLC16A3.

Application Notes:

The suggested dilution is:

ELISA 1:1,000

Western blotting 1:100~500

Immunohistochemistry 1:10~50

Format:

Purified polyclonal antibody supplied in PBS with 0.09% (W/V) sodium azide. This antibody is purified through a protein A column, followed by peptide affinity purification.

Storage:

SLC16A3 Antibody (C-term) can be refrigerated at 2-8°C for up to 6 months. For long term storage, place the at -20°C.

Precautions:

SLC16A3 Antibody (C-term) is for research use only and not for use in diagnostic or therapeutic procedures.
