

## CCNL2 Antibody (Center)

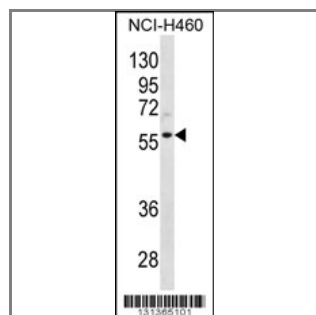
### Peptide Affinity Purified Rabbit Polyclonal Antibody (Pab)

Catalog #	Applications:	Reactivity:	Accessions:
AP12396c	WB, E	H	<a href="#">Q96S94</a> , <a href="#">NP_001034666.1</a> , <a href="#">NP_112199.2</a>

Concentration:	Size:	Isotype:	Clone Name:
0.25 mg/ml	0.1 mg	Rabbit Ig	RB31365

#### Application Data:

Calculated MW: 58147 Da



CCNL2 Antibody (Center) (Cat. #AP12396c) western blot analysis in NCI-H460 cell line lysates (35ug/lane). This demonstrates the CCNL2 antibody detected the CCNL2 protein (arrow).

Gene ID:	Gene Symbol:
<a href="#">81669</a>	CCNL2

#### Other Names:

CCNL2;Cyclin-L2;

#### Target/Specificity:

This CCNL2 antibody is generated from rabbits immunized with a KLH conjugated synthetic peptide between 345-374 amino acids from the Central region of human CCNL2.

#### Application Notes:

The suggested dilution is:

ELISA 1:1,000

Western blotting 1:100~500

#### Format:

Purified polyclonal antibody supplied in PBS with 0.09% (W/V) sodium azide. This antibody is purified through a protein A column, followed by peptide affinity purification.

#### Storage:

CCNL2 Antibody (Center) can be refrigerated at 2-8&deg;C for up to 6 months. For long term storage, place the at -20&deg;C.

---

**Precautions:**

CCNL2 Antibody (Center) is for research use only and not for use in diagnostic or therapeutic procedures.

---