

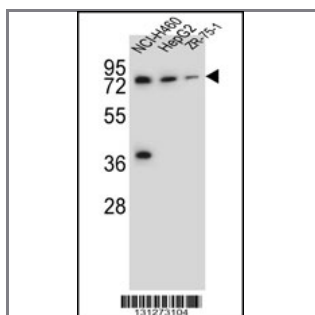
UGT2B15 Antibody (Center)

Peptide Affinity Purified Rabbit Polyclonal Antibody (Pab)

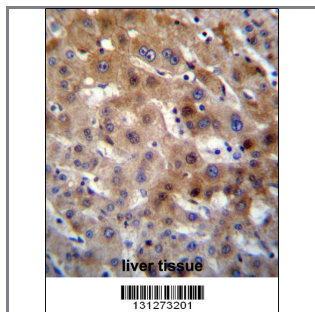
Catalog #	Applications:	Reactivity:	Accessions:
AP12375c	WB, FC, IF, IHC, E	H	NP_001067.2 , P54855

Concentration:	Size:	Isotype:	Clone Name:
0.25 mg/ml	0.1 mg	Rabbit Ig	RB31273

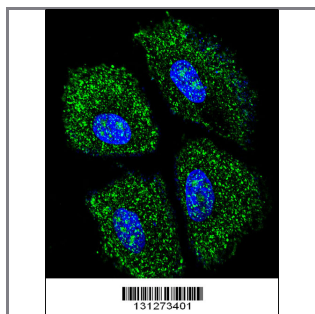
Application Data: Calculated MW: 60988 Da



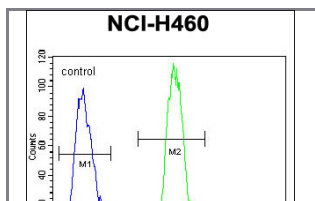
UGT2B15 Antibody (Center) (Cat. #AP12375c) western blot analysis in NCI-H460, HepG2, ZR-75-1 cell line lysates (35ug/lane). This demonstrates the UGT2B15 antibody detected the UGT2B15 protein (arrow).



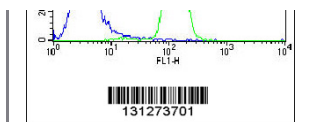
UGT2B15 Antibody (Center) (Cat. #AP12375c) immunohistochemistry analysis in formalin fixed and paraffin embedded human liver tissue followed by peroxidase conjugation of the secondary antibody and DAB staining. This data demonstrates the use of UGT2B15 Antibody (Center) for immunohistochemistry. Clinical relevance has not been evaluated.



Confocal immunofluorescent analysis of UGT2B15 Antibody (Center) (Cat. #AP12375c) with NCI-H460 cells followed by Alexa Fluor 488-conjugated goat anti-rabbit IgG (green). DAPI was used to stain the cell nuclear (blue).



UGT2B15 Antibody (Center) (Cat. #AP12375c) flow cytometric analysis of NCI-H460 cells (right histogram) compared to a negative control cell (left histogram). FITC-conjugated goat-anti-rabbit secondary antibodies were



used for the analysis.

Gene ID:

7366

Gene Symbol:

UGT2B15

Other Names:

UGT2B15;UDP-glucuronosyltransferase 2B15;UGT2B8

Target/Specificity:

This UGT2B15 antibody is generated from rabbits immunized with a KLH conjugated synthetic peptide between 163-193 amino acids from the Central region of human UGT2B15.

Application Notes:

The suggested dilution is:

ELISA 1:1,000

Western blotting 1:100~500

Immunohistochemistry 1:10~50

Immunofluorescence 1:10~50

Flow cytometric 1:10~50

Format:

Purified polyclonal antibody supplied in PBS with 0.09% (W/V) sodium azide. This antibody is purified through a protein A column, followed by peptide affinity purification.

Storage:

UGT2B15 Antibody (Center) can be refrigerated at 2-8°C for up to 6 months. For long term storage, place the at -20°C.

Precautions:

UGT2B15 Antibody (Center) is for research use only and not for use in diagnostic or therapeutic procedures.
