

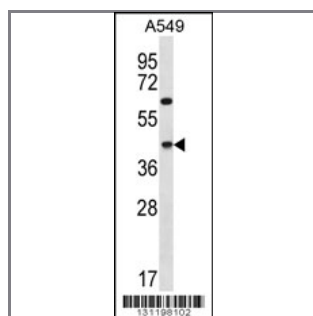
C109B Antibody (C-term)

Peptide Affinity Purified Rabbit Polyclonal Antibody (Pab)

Catalog #	Applications:	Reactivity:	Accessions:
AP12355b	WB, E	H	Q9NWR8 , NP_060388.2
Concentration:	Size:	Isotype:	Clone Name:
0.25 mg/ml	0.1 mg	Rabbit Ig	RB31198

Application Data:

Calculated MW: 39082 Da



C109B Antibody (C-term) (Cat. #AP12355b) western blot analysis in A549 cell line lysates (35ug/lane). This demonstrates the C109B antibody detected the C109B protein (arrow).

Gene ID:	Gene Symbol:
55013	CCDC109B

Other Names:

CCDC109B;Coiled-coil domain-containing protein 109B;

Target/Specificity:

This C109B antibody is generated from rabbits immunized with a KLH conjugated synthetic peptide between 298-328 amino acids from the C-terminal region of human C109B.

Application Notes:

The suggested dilution is:

ELISA 1:1,000

Western blotting 1:100~500

Format:

Purified polyclonal antibody supplied in PBS with 0.09% (W/V) sodium azide. This antibody is purified through a protein A column, followed by peptide affinity purification.

Storage:

C109B Antibody (C-term) can be refrigerated at 2-8°C for up to 6 months. For long term storage, place the at -20°C.

Precautions:

C109B Antibody (C-term) is for research use only and not for use in diagnostic or therapeutic procedures.
