

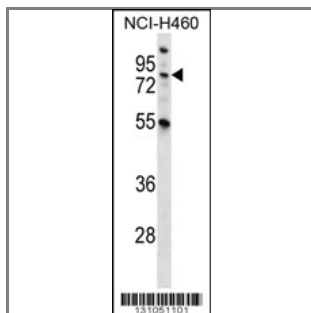
## MST1 Antibody (C-term)

### Peptide Affinity Purified Rabbit Polyclonal Antibody (Pab)

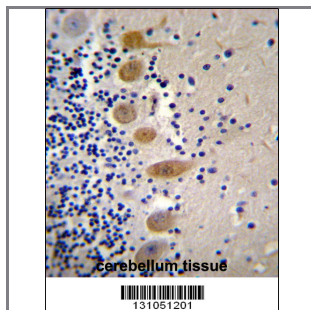
Catalog #	Applications:	Reactivity:	Accessions:
AP12352b	WB, FC, IHC, E	H	<a href="#">P26927</a> , <a href="#">NP_066278.3</a>
Concentration:	Size:	Isotype:	Clone Name:
0.25 mg/ml	0.1 mg	Rabbit Ig	RB31051

#### Application Data:

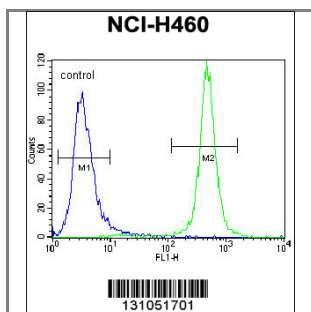
Calculated MW: 80320 Da



MST1 Antibody (C-term) (Cat. #AP12352b) western blot analysis in NCI-H460 cell line lysates (35ug/lane). This demonstrates the MST1 antibody detected the MST1 protein (arrow).



MST1 Antibody (C-term) (Cat. #AP12352b) immunohistochemistry analysis in formalin fixed and paraffin embedded human cerebellum tissue followed by peroxidase conjugation of the secondary antibody and DAB staining. This data demonstrates the use of MST1 Antibody (C-term) for immunohistochemistry. Clinical relevance has not been evaluated.



MST1 Antibody (C-term) (Cat. #AP12352b) flow cytometric analysis of NCI-H460 cells (right histogram) compared to a negative control cell (left histogram). FITC-conjugated goat-anti-rabbit secondary antibodies were used for the analysis.

**Gene ID:** [4485](#)  
**Gene Symbol:** MST1

**Other Names:**

MST1;Hepatocyte growth factor-like protein;D3F15S2; DNF15S2; HGFL

---

**Target/Specificity:**

This MST1 antibody is generated from rabbits immunized with a KLH conjugated synthetic peptide between 475-505 amino acids from the C-terminal region of human MST1.

---

**Application Notes:**

The suggested dilution is:

ELISA 1:1,000

Western blotting 1:100~500

Immunohistochemistry 1:10~50

Flow cytometric 1:10~50

---

**Format:**

Purified polyclonal antibody supplied in PBS with 0.09% (W/V) sodium azide. This antibody is purified through a protein A column, followed by peptide affinity purification.

---

**Storage:**

MST1 Antibody (C-term) can be refrigerated at 2-8°C for up to 6 months. For long term storage, place the at -20°C.

---

**Precautions:**

MST1 Antibody (C-term) is for research use only and not for use in diagnostic or therapeutic procedures.

---