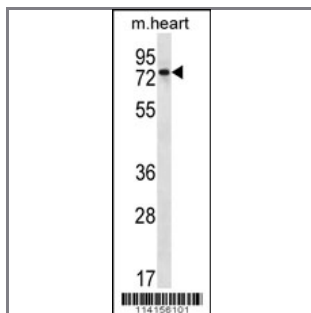


PARP2 Antibody (C-term)

Purified Rabbit Polyclonal Antibody (Pab)

Catalog #	Applications:	Reactivity:	Accessions:
AP12345b	WB, E	H(predict), M	NP_033762.1 , O88554
Concentration:	Size:	Isotype:	Clone Name:
0.25 mg/ml	0.1 mg	Rabbit Ig	RB14156

Application Data: **Calculated MW: 63397 Da**



PARP2 Antibody (C-term) (Cat. #AP12345b) western blot analysis in mouse heart tissue lysates (35ug/lane). This demonstrates the PARP2 antibody detected the PARP2 protein (arrow).

Gene ID: [11546](#)
Gene Symbol: Parp2

Other Names:

Parp2; Poly [ADP-ribose] polymerase 2; Adprt2; Adprt12; Aspart12

Target/Specificity:

This PARP2 antibody is generated from rabbits immunized with a KLH conjugated synthetic peptide between 313-344 amino acids from the C-terminal region of human PARP2.

Application Notes:

The suggested dilution is:

ELISA 1:1,000

Western blotting 1:50~100

Format:

Purified polyclonal antibody supplied in PBS with 0.09% (W/V) sodium azide. This antibody is prepared by Saturated Ammonium Sulfate (SAS) precipitation followed by dialysis against PBS.

Storage:

PARP2 Antibody (C-term) can be refrigerated at 2-8°C for up to 6 months. For long term storage,

place the at -20°C.

Precautions:

PARP2 Antibody (C-term) is for research use only and not for use in diagnostic or therapeutic procedures.
