

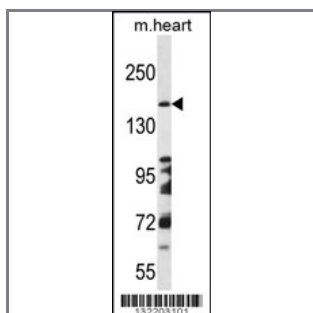
DCC Antibody (Center)

Peptide Affinity Purified Rabbit Polyclonal Antibody (Pab)

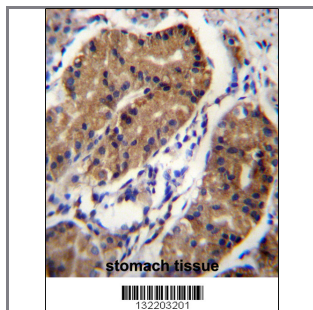
Catalog #	Applications:	Reactivity:	Accessions:
AP12334c	WB, IHC, E	H(predict), M	NP_005206.2 , P43146
Concentration:	Size:	Isotype:	Clone Name:
0.25 mg/ml	0.1 mg	Rabbit Ig	RB32203

Application Data:

Calculated MW: 158457 Da



DCC Antibody (Center) (Cat. #AP12334c) western blot analysis in mouse heart tissue lysates (35ug/lane). This demonstrates the DCC antibody detected the DCC protein (arrow).



DCC Antibody (Center) (Cat. #AP12334c) immunohistochemistry analysis in formalin fixed and paraffin embedded human stomach tissue followed by peroxidase conjugation of the secondary antibody and DAB staining. This data demonstrates the use of DCC Antibody (Center) for immunohistochemistry. Clinical relevance has not been evaluated.

Gene ID:	Gene Symbol:
1630	DCC

Other Names:

DCC; Netrin receptor DCC; IGDC1

Target/Specificity:

This DCC antibody is generated from rabbits immunized with a KLH conjugated synthetic peptide between 642-670 amino acids from the Central region of human DCC.

Application Notes:

The suggested dilution is:
ELISA 1:1,000

Western blotting 1:100~500
Immunohistochemistry 1:10~50

Format:

Purified polyclonal antibody supplied in PBS with 0.09% (W/V) sodium azide. This antibody is purified through a protein A column, followed by peptide affinity purification.

Storage:

DCC Antibody (Center) can be refrigerated at 2-8°C for up to 6 months. For long term storage, place the at -20°C.

Precautions:

DCC Antibody (Center) is for research use only and not for use in diagnostic or therapeutic procedures.
