

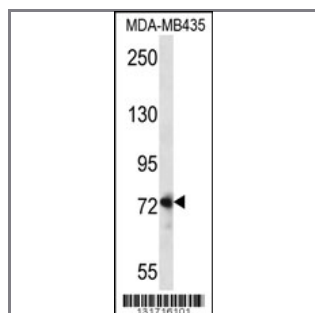
## DVL1 Antibody (Center)

### Peptide Affinity Purified Rabbit Polyclonal Antibody (Pab)

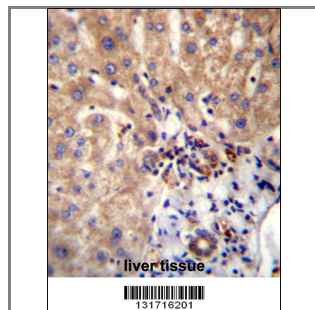
Catalog #	Applications:	Reactivity:	Accessions:
AP12326c	WB, IF, IHC, E	H	<a href="#">NP_004412.2</a> , <a href="#">O14640</a>
Concentration:	Size:	Isotype:	Clone Name:
0.25 mg/ml	0.1 mg	Rabbit Ig	RB31716

#### Application Data:

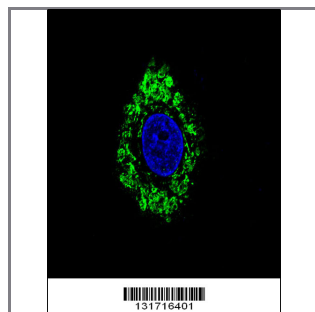
Calculated MW: 75187 Da



DVL1 Antibody (Center) (Cat. #AP12326c) western blot analysis in MDA-MB435 cell line lysates (35ug/lane). This demonstrates the DVL1 antibody detected the DVL1 protein (arrow).



DVL1 Antibody (Center) (Cat. #AP12326c) immunohistochemistry analysis in formalin fixed and paraffin embedded human liver tissue followed by peroxidase conjugation of the secondary antibody and DAB staining. This data demonstrates the use of DVL1 Antibody (Center) for immunohistochemistry. Clinical relevance has not been evaluated.



Confocal immunofluorescent analysis of DVL1 Antibody (Center) (Cat#AP12326c) with HepG2 cell followed by Alexa Fluor 488-conjugated goat anti-rabbit IgG (green). DAPI was used to stain the cell nuclear (blue).

Gene ID:	Gene Symbol:
<a href="#">1855</a>	DVL1

#### Other Names:

DVL1;Segment polarity protein dishevelled homolog DVL-1;

---

**Target/Specificity:**

This DVL1 antibody is generated from rabbits immunized with a KLH conjugated synthetic peptide between 441-470 amino acids from the Central region of human DVL1.

---

**Application Notes:**

The suggested dilution is:

ELISA 1:1,000

Western blotting 1:100~500

Immunohistochemistry 1:10~50

Immunofluorescence 1:10~50

---

**Format:**

Purified polyclonal antibody supplied in PBS with 0.09% (W/V) sodium azide. This antibody is purified through a protein A column, followed by peptide affinity purification.

---

**Storage:**

DVL1 Antibody (Center) can be refrigerated at 2-8°C for up to 6 months. For long term storage, place the at -20°C.

---

**Precautions:**

DVL1 Antibody (Center) is for research use only and not for use in diagnostic or therapeutic procedures.

---