

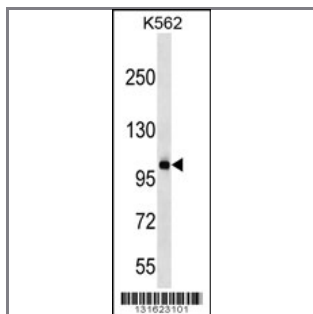
PCDHA6 Antibody (C-term)

Peptide Affinity Purified Rabbit Polyclonal Antibody (Pab)

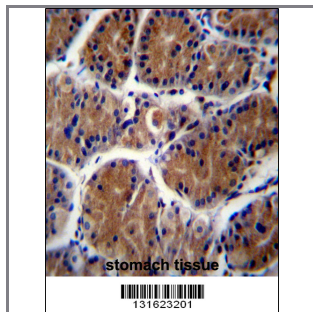
Catalog #	Applications:	Reactivity:	Accessions:
AP12324b	WB, IHC, E	H	Q9UN73 , NP_114037.1 , NP_061732.1 , NP_114036.1

Concentration:	Size:	Isotype:	Clone Name:
0.25 mg/ml	0.1 mg	Rabbit Ig	RB31623

Application Data: Calculated MW: 102716 Da



PCDHA6 Antibody (C-term) (Cat. #AP12324b) western blot analysis in K562 cell line lysates (35ug/lane). This demonstrates the PCDHA6 antibody detected the PCDHA6 protein (arrow).



PCDHA6 Antibody (C-term) (Cat. #AP12324b) immunohistochemistry analysis in formalin fixed and paraffin embedded human stomach tissue followed by peroxidase conjugation of the secondary antibody and DAB staining. This data demonstrates the use of PCDHA6 Antibody (C-term) for immunohistochemistry. Clinical relevance has not been evaluated.

Gene ID:	Gene Symbol:
56142	PCDHA6

Other Names:

PCDHA6;Protocadherin alpha-6;CNRS2

Target/Specificity:

This PCDHA6 antibody is generated from rabbits immunized with a KLH conjugated synthetic peptide between 772-800 amino acids from the C-terminal region of human PCDHA6.

Application Notes:

The suggested dilution is:

ELISA 1:1,000

Western blotting 1:100~500

Immunohistochemistry 1:10~50

Format:

Purified polyclonal antibody supplied in PBS with 0.09% (W/V) sodium azide. This antibody is purified through a protein A column, followed by peptide affinity purification.

Storage:

PCDHA6 Antibody (C-term) can be refrigerated at 2-8°C for up to 6 months. For long term storage, place the at -20°C.

Precautions:

PCDHA6 Antibody (C-term) is for research use only and not for use in diagnostic or therapeutic procedures.
