

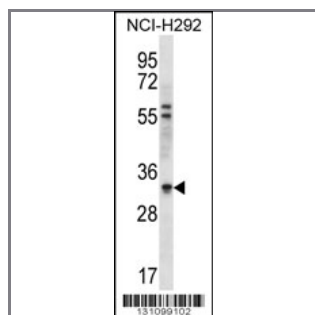
## HAX1 Antibody (C-term)

### Peptide Affinity Purified Rabbit Polyclonal Antibody (Pab)

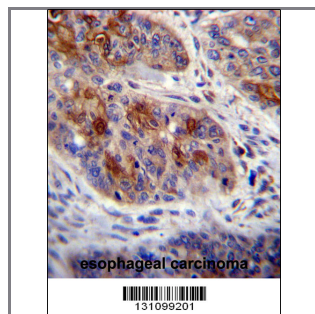
Catalog #	Applications:	Reactivity:	Accessions:
AP12311b	WB, IHC, E	H	<a href="#">NP_001018238.1</a> , <a href="#">NP_006109.2</a> , <a href="#">O00165</a>
Concentration:	Size:	Isotype:	Clone Name:
0.25 mg/ml	0.1 mg	Rabbit Ig	RB31099

#### Application Data:

**Calculated MW: 31621 Da**



HAX1 Antibody (C-term) (Cat. #AP12311b) western blot analysis in NCI-H292 cell line lysates (35ug/lane). This demonstrates the HAX1 antibody detected the HAX1 protein (arrow).



HAX1 Antibody (C-term) (Cat. #AP12311b) immunohistochemistry analysis in formalin fixed and paraffin embedded human esophageal carcinoma followed by peroxidase conjugation of the secondary antibody and DAB staining. This data demonstrates the use of HAX1 Antibody (C-term) for immunohistochemistry. Clinical relevance has not been evaluated.

Gene ID:	Gene Symbol:
<a href="#">10456</a>	HAX1

#### Other Names:

HAX1;HCLS1-associated protein X-1;HS1BP1

#### Target/Specificity:

This HAX1 antibody is generated from rabbits immunized with a KLH conjugated synthetic peptide between 160-190 amino acids from the C-terminal region of human HAX1.

#### Application Notes:

The suggested dilution is:

ELISA 1:1,000

Western blotting 1:100~500

Immunohistochemistry 1:10~50

---

**Format:**

Purified polyclonal antibody supplied in PBS with 0.09% (W/V) sodium azide. This antibody is purified through a protein A column, followed by peptide affinity purification.

---

**Storage:**

HAX1 Antibody (C-term) can be refrigerated at 2-8°C for up to 6 months. For long term storage, place the at -20°C.

---

**Precautions:**

HAX1 Antibody (C-term) is for research use only and not for use in diagnostic or therapeutic procedures.

---