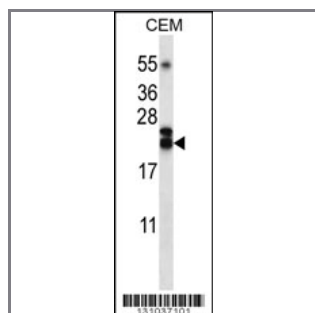


## TNFSF4 Antibody (Center)

### Peptide Affinity Purified Rabbit Polyclonal Antibody (Pab)

<b>Catalog #</b>	<b>Applications:</b>	<b>Reactivity:</b>	<b>Accessions:</b>
AP12286c	WB, E	H	<a href="#">NP_003317.1</a> , <a href="#">P23510</a>
<b>Concentration:</b>	<b>Size:</b>	<b>Isotype:</b>	<b>Clone Name:</b>
0.25 mg/ml	0.1 mg	Rabbit Ig	RB31037

**Application Data:**
**Calculated MW: 21050 Da**


TNFSF4 Antibody (Center) (Cat. #AP12286c) western blot analysis in CEM cell line lysates (35ug/lane). This demonstrates the TNFSF4 antibody detected the TNFSF4 protein (arrow).

<b>Gene ID:</b>	<b>Gene Symbol:</b>
<a href="#">7292</a>	TNFSF4

**Other Names:**

TNFSF4;Tumor necrosis factor ligand superfamily member 4;TXGP1

**Target/Specificity:**

This TNFSF4 antibody is generated from rabbits immunized with a KLH conjugated synthetic peptide between 101-131 amino acids from the Central region of human TNFSF4.

**Application Notes:**

The suggested dilution is:

ELISA 1:1,000

Western blotting 1:100~500

**Format:**

Purified polyclonal antibody supplied in PBS with 0.09% (W/V) sodium azide. This antibody is purified through a protein A column, followed by peptide affinity purification.

**Storage:**

TNFSF4 Antibody (Center) can be refrigerated at 2-8°C for up to 6 months. For long term storage,

place the at -20&deg;C.

---

**Precautions:**

TNFSF4 Antibody (Center) is for research use only and not for use in diagnostic or therapeutic procedures.

---