

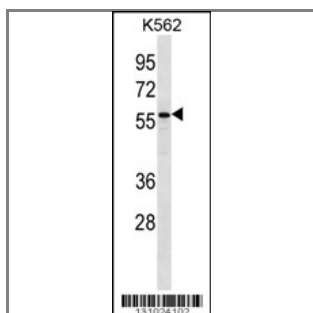
CYP27B1 Antibody (C-term)

Peptide Affinity Purified Rabbit Polyclonal Antibody (Pab)

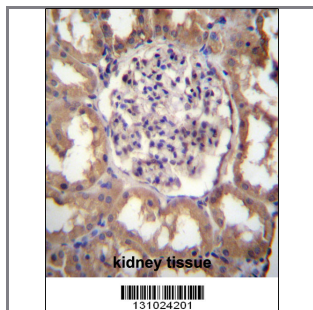
Catalog #	Applications:	Reactivity:	Accessions:
AP12284b	WB, IHC, E	H	O15528 , NP_000776.1
Concentration:	Size:	Isotype:	Clone Name:
0.25 mg/ml	0.1 mg	Rabbit Ig	RB31024

Application Data:

Calculated MW: 56504 Da



CYP27B1 Antibody (C-term) (Cat. #AP12284b) western blot analysis in K562 cell line lysates (35ug/lane). This demonstrates the CYP27B1 antibody detected the CYP27B1 protein (arrow).



CYP27B1 Antibody (C-term) (Cat. #AP12284b) immunohistochemistry analysis in formalin fixed and paraffin embedded human kidney tissue followed by peroxidase conjugation of the secondary antibody and DAB staining. This data demonstrates the use of CYP27B1 Antibody (C-term) for immunohistochemistry. Clinical relevance has not been evaluated.

Gene ID:	Gene Symbol:
1594	CYP27B1

Other Names:

CYP27B1; 25-hydroxyvitamin D-1 alpha hydroxylase, mitochondrial; CYP1ALPHA; CYP27B

Target/Specificity:

This CYP27B1 antibody is generated from rabbits immunized with a KLH conjugated synthetic peptide between 399-429 amino acids from the C-terminal region of human CYP27B1.

Application Notes:

The suggested dilution is:
ELISA 1:1,000

Western blotting 1:100~500
Immunohistochemistry 1:10~50

Format:

Purified polyclonal antibody supplied in PBS with 0.09% (W/V) sodium azide. This antibody is purified through a protein A column, followed by peptide affinity purification.

Storage:

CYP27B1 Antibody (C-term) can be refrigerated at 2-8°C for up to 6 months. For long term storage, place the at -20°C.

Precautions:

CYP27B1 Antibody (C-term) is for research use only and not for use in diagnostic or therapeutic procedures.
