

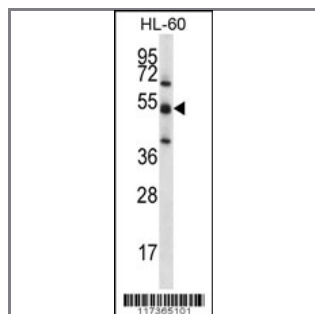
## TOE1 Antibody (N-term)

### Peptide Affinity Purified Rabbit Polyclonal Antibody (Pab)

Catalog #	Applications:	Reactivity:	Accessions:
AP12267a	WB, E	H	<a href="#">Q96GM8</a> , <a href="#">NP_079353.3</a>
Concentration:	Size:	Isotype:	Clone Name:
0.25 mg/ml	0.1 mg	Rabbit Ig	RB17365

#### Application Data:

Calculated MW: 56548 Da



TOE1 Antibody (N-term) (Cat. #AP12267a) western blot analysis in HL-60 cell line lysates (35ug/lane). This demonstrates the TOE1 antibody detected the TOE1 protein (arrow).

Gene ID:	Gene Symbol:
<a href="#">114034</a>	TOE1

#### Other Names:

TOE1; Target of EGR1 protein 1;

#### Target/Specificity:

This TOE1 antibody is generated from rabbits immunized with a KLH conjugated synthetic peptide between 89-117 amino acids from the N-terminal region of human TOE1.

#### Application Notes:

The suggested dilution is:

ELISA 1:1,000

Western blotting 1:100~500

#### Format:

Purified polyclonal antibody supplied in PBS with 0.09% (W/V) sodium azide. This antibody is purified through a protein A column, followed by peptide affinity purification.

#### Storage:

TOE1 Antibody (N-term) can be refrigerated at 2-8°C for up to 6 months. For long term storage, place the at -20°C.

---

**Precautions:**

TOE1 Antibody (N-term) is for research use only and not for use in diagnostic or therapeutic procedures.

---