

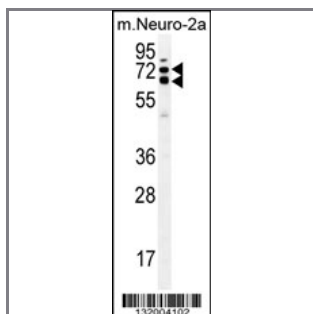
## KLC2 Antibody (N-term)

### Peptide Affinity Purified Rabbit Polyclonal Antibody (Pab)

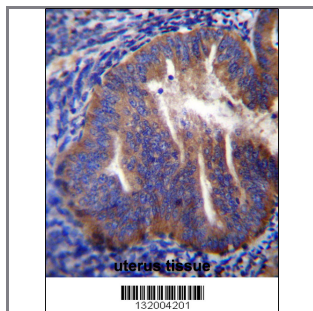
Catalog #	Applications:	Reactivity:	Accessions:
AP12241a	WB, IHC, E	H(predict), M	<a href="#">NP_073733.1</a> , <a href="#">Q9H0B6</a>
Concentration:	Size:	Isotype:	Clone Name:
0.25 mg/ml	0.1 mg	Rabbit Ig	RB32004

#### Application Data:

Calculated MW: 68935 Da



KLC2 Antibody (N-term) (Cat. #AP12241a) western blot analysis in mouse Neuro-2a cell line lysates (35ug/lane). This demonstrates the KLC2 antibody detected the KLC2 protein (arrow).



KLC2 Antibody (N-term) (Cat. #AP12241a) immunohistochemistry analysis in formalin fixed and paraffin embedded human uterus tissue followed by peroxidase conjugation of the secondary antibody and DAB staining. This data demonstrates the use of KLC2 Antibody (N-term) for immunohistochemistry. Clinical relevance has not been evaluated.

Gene ID:	Gene Symbol:
<a href="#">64837</a>	KLC2

#### Other Names:

KLC2, Kinesin light chain 2,

#### Target/Specificity:

This KLC2 antibody is generated from rabbits immunized with a KLH conjugated synthetic peptide between 127-156 amino acids from the N-terminal region of human KLC2.

#### Application Notes:

The suggested dilution is:

ELISA 1:1,000  
Western blotting 1:100~500  
Immunohistochemistry 1:10~50

---

**Format:**

Purified polyclonal antibody supplied in PBS with 0.09% (W/V) sodium azide. This antibody is purified through a protein A column, followed by peptide affinity purification.

---

**Storage:**

KLC2 Antibody (N-term) can be refrigerated at 2-8°C for up to 6 months. For long term storage, place the at -20°C.

---

**Precautions:**

KLC2 Antibody (N-term) is for research use only and not for use in diagnostic or therapeutic procedures.

---