

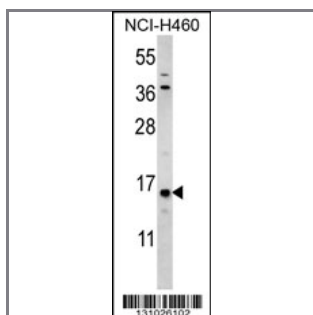
HIST3H3 Antibody (Center)

Peptide Affinity Purified Rabbit Polyclonal Antibody (Pab)

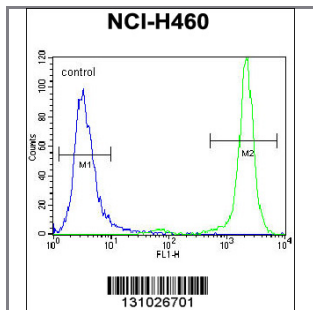
Catalog #	Applications:	Reactivity:	Accessions:
AP12225c	WB, FC, E	H	Q16695 , NP_003484.1
Concentration:	Size:	Isotype:	Clone Name:
0.25 mg/ml	0.1 mg	Rabbit Ig	RB31026

Application Data:

Calculated MW: 15508 Da



HIST3H3 Antibody (Center) (Cat. #AP12225c) western blot analysis in NCI-H460 cell line lysates (35ug/lane). This demonstrates the HIST3H3 antibody detected the HIST3H3 protein (arrow).



HIST3H3 Antibody (Center) (Cat. #AP12225c) flow cytometric analysis of NCI-H460 cells (right histogram) compared to a negative control cell (left histogram). FITC-conjugated goat-anti-rabbit secondary antibodies were used for the analysis.

Gene ID:	Gene Symbol:
8290	HIST3H3

Other Names:

HIST3H3, Histone H3.1t, H3FT

Target/Specificity:

This HIST3H3 antibody is generated from rabbits immunized with a KLH conjugated synthetic peptide between 49-78 amino acids from the Central region of human HIST3H3.

Application Notes:

The suggested dilution is:
ELISA 1:1,000

Western blotting 1:100~500

Flow cytometric 1:10~50

Format:

Purified polyclonal antibody supplied in PBS with 0.09% (W/V) sodium azide. This antibody is purified through a protein A column, followed by peptide affinity purification.

Storage:

HIST3H3 Antibody (Center) can be refrigerated at 2-8°C for up to 6 months. For long term storage, place the at -20°C.

Precautions:

HIST3H3 Antibody (Center) is for research use only and not for use in diagnostic or therapeutic procedures.
