

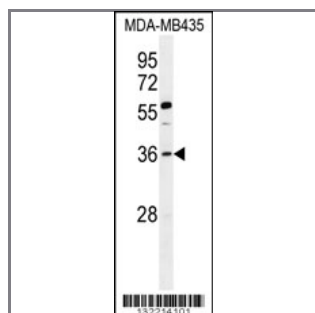
FOX E3 Antibody (Center)

Peptide Affinity Purified Rabbit Polyclonal Antibody (Pab)

Catalog #	Applications:	Reactivity:	Accessions:
AP12176c	WB, E	H	NP_036318.1 , Q13461
Concentration:	Size:	Isotype:	Clone Name:
0.25 mg/ml	0.1 mg	Rabbit Ig	RB32214

Application Data:

Calculated MW: 33234 Da



FOX E3 Antibody (Center) (Cat. #AP12176c) western blot analysis in MDA-MB435 cell line lysates (35ug/lane). This demonstrates the FOX E3 antibody detected the FOX E3 protein (arrow).

Gene ID:	Gene Symbol:
2301	FOX E3

Other Names:

FOX E3, Forkhead box protein E3, FKHL12, FREAC8

Target/Specificity:

This FOX E3 antibody is generated from rabbits immunized with a KLH conjugated synthetic peptide between 94-122 amino acids from the Central region of human FOX E3.

Application Notes:

The suggested dilution is:

ELISA 1:1,000

Western blotting 1:100~500

Format:

Purified polyclonal antibody supplied in PBS with 0.09% (W/V) sodium azide. This antibody is purified through a protein A column, followed by peptide affinity purification.

Storage:

Maintain refrigerated at 2-8°C for up to 6 months. For long term storage store at -20°C in

small aliquots to prevent freeze-thaw cycles.

Precautions:

FOX E3 Antibody (Center) is for research use only and not for use in diagnostic or therapeutic procedures.
