

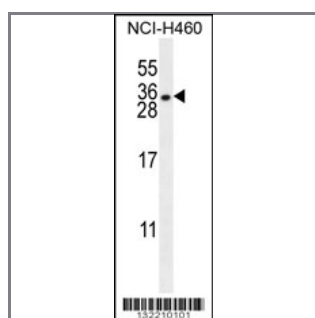
HLA-DQA1 Antibody (N-term)

Peptide Affinity Purified Rabbit Polyclonal Antibody (Pab)

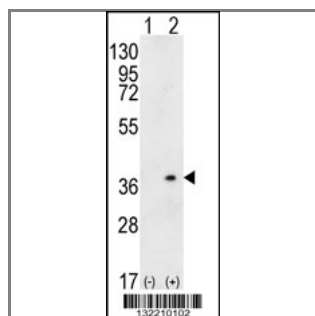
Catalog #	Applications:	Reactivity:	Accessions:
AP12174a	WB, FC, E	H	XP_001722157.1 , XP_002343952.1 , NP_002113.2 , P01908
Concentration:	Size:	Isotype:	Clone Name:
0.25 mg/ml	0.1 mg	Rabbit Ig	RB32210

Application Data:

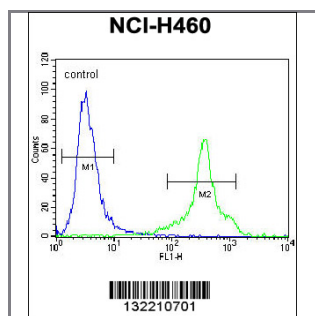
Calculated MW: 27805 Da



HLA-DQA1 Antibody (N-term) (Cat. #AP12174a) western blot analysis in NCI-H460 cell line lysates (35ug/lane). This demonstrates the HLA-DQA1 antibody detected the HLA-DQA1 protein (arrow).



Western blot analysis of HLA-DQA1 (arrow) using rabbit polyclonal HLA-DQA1 Antibody (N-term) (Cat. #AP12174a). 293 cell lysates (2 ug/lane) either nontransfected (Lane 1) or transiently transfected (Lane 2) with the HLA-DQA1 gene.



HLA-DQA1 Antibody (N-term) (Cat. #AP12174a) flow cytometric analysis of NCI-H460 cells (right histogram) compared to a negative control cell (left histogram). FITC-conjugated goat-anti-rabbit secondary antibodies were used for the analysis.

Gene ID:	Gene Symbol:
3117	HLA-DQA1

Other Names:

HLA-DQA1, HLA class II histocompatibility antigen, DQ alpha 1 chain,

Target/Specificity:

This HLA-DQA1 antibody is generated from rabbits immunized with a KLH conjugated synthetic peptide between 46-74 amino acids from the N-terminal region of human HLA-DQA1.

Application Notes:

The suggested dilution is:

ELISA 1:1,000

Western blotting 1:100~500

Flow cytometric 1:10~50

Format:

Purified polyclonal antibody supplied in PBS with 0.09% (W/V) sodium azide. This antibody is purified through a protein A column, followed by peptide affinity purification.

Storage:

Maintain refrigerated at 2-8°C for up to 6 months. For long term storage store at -20°C in small aliquots to prevent freeze-thaw cycles.

Precautions:

HLA-DQA1 Antibody (N-term) is for research use only and not for use in diagnostic or therapeutic procedures.
