

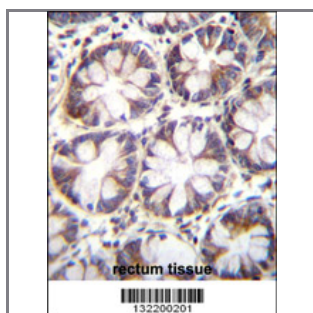
## SLC36A1 Antibody (N-term)

### Peptide Affinity Purified Rabbit Polyclonal Antibody (Pab)

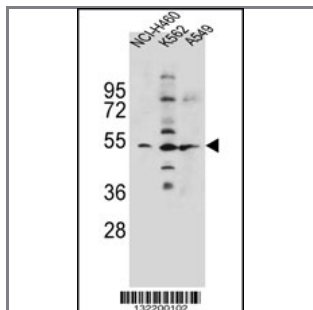
Catalog #	Applications:	Reactivity:	Accessions:
AP12170a	WB, IF, IHC, E	H	<a href="#">Q7Z2H8</a> , <a href="#">NP_510968.2</a>
Concentration:	Size:	Isotype:	Clone Name:
0.25 mg/ml	0.1 mg	Rabbit Ig	RB32200

#### Application Data:

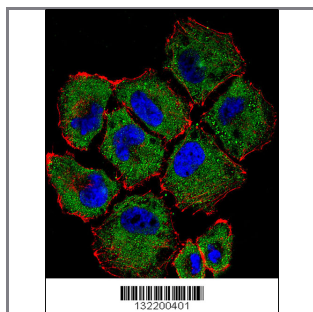
**Calculated MW: 53076 Da**



SLC36A1 Antibody (N-term) (Cat. #AP12170a) immunohistochemistry analysis in formalin fixed and paraffin embedded human rectum tissue followed by peroxidase conjugation of the secondary antibody and DAB staining. This data demonstrates the use of SLC36A1 Antibody (N-term) for immunohistochemistry. Clinical relevance has not been evaluated.



SLC36A1 Antibody (N-term) (Cat. #AP12170a) western blot analysis in NCI-H460, K562, A549 cell line lysates (35ug/lane). This demonstrates the SLC36A1 antibody detected the SLC36A1 protein (arrow).



Confocal immunofluorescent analysis of SLC36A1 Antibody (N-term) (Cat#AP12170a) with NCI-H460 cell followed by Alexa Fluor 488-conjugated goat anti-rabbit IgG (green). Actin filaments have been labeled with Alexa Fluor 555 phalloidin (red). DAPI was used to stain the cell nuclear (blue).

Gene ID:	Gene Symbol:
<a href="#">206358</a>	SLC36A1

#### Other Names:

SLC36A1,Proton-coupled amino acid transporter 1,PAT1

---

**Target/Specificity:**

This SLC36A1 antibody is generated from rabbits immunized with a KLH conjugated synthetic peptide between 1-30 amino acids from the N-terminal region of human SLC36A1.

---

**Application Notes:**

The suggested dilution is:

ELISA 1:1,000

Western blotting 1:100~500

Immunohistochemistry 1:10~50

Immunofluorescence 1:10~50

---

**Format:**

Purified polyclonal antibody supplied in PBS with 0.09% (W/V) sodium azide. This antibody is purified through a protein A column, followed by peptide affinity purification.

---

**Storage:**

Maintain refrigerated at 2-8°C for up to 6 months. For long term storage store at -20°C in small aliquots to prevent freeze-thaw cycles.

---

**Precautions:**

SLC36A1 Antibody (N-term) is for research use only and not for use in diagnostic or therapeutic procedures.

---